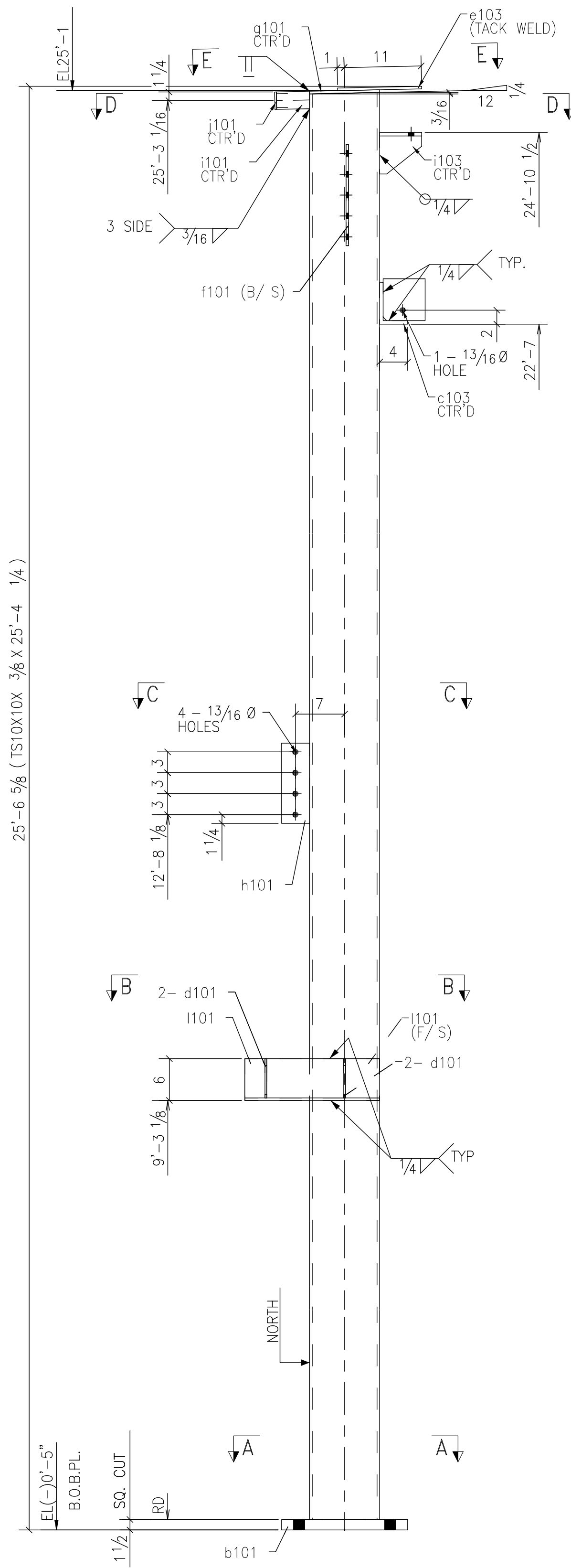
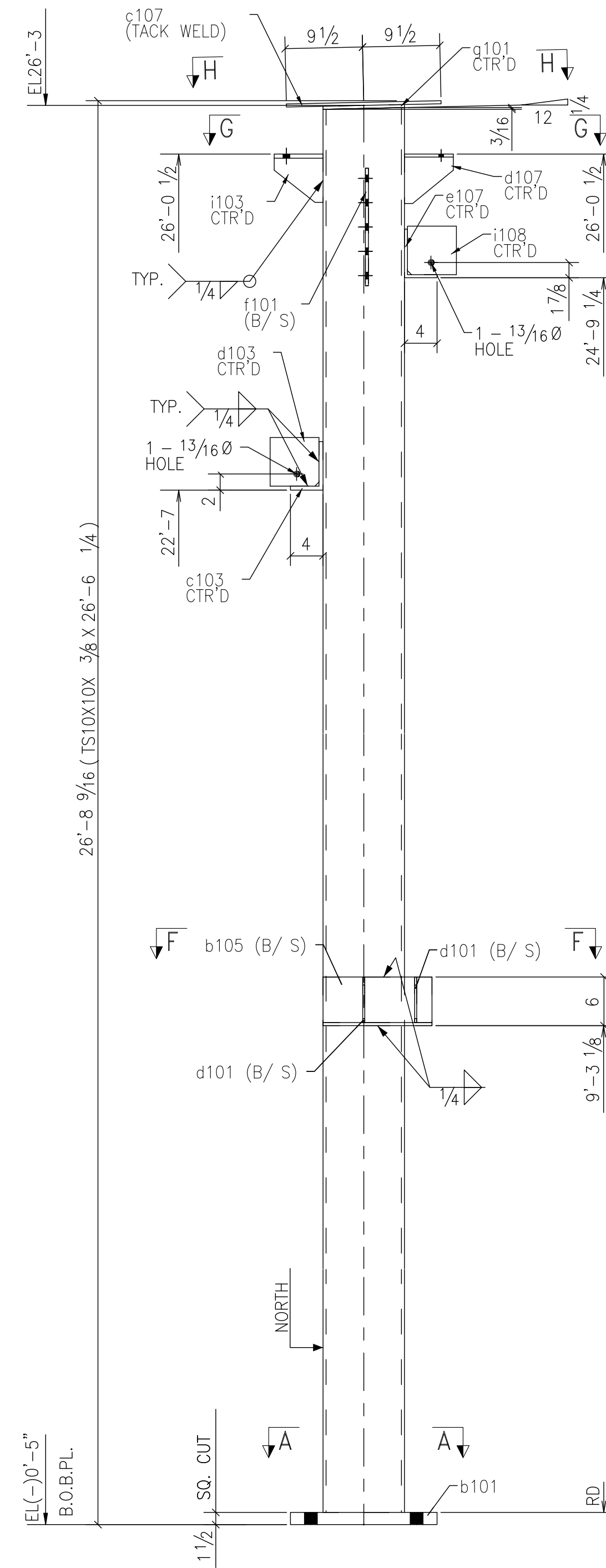
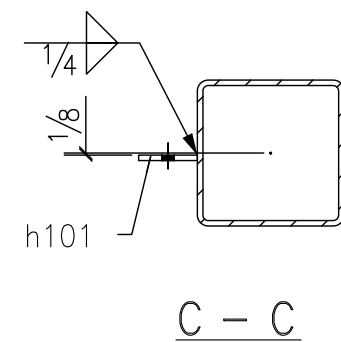
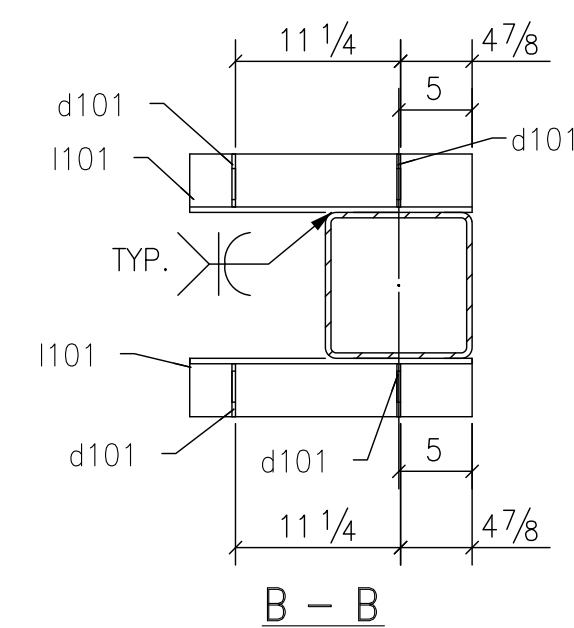
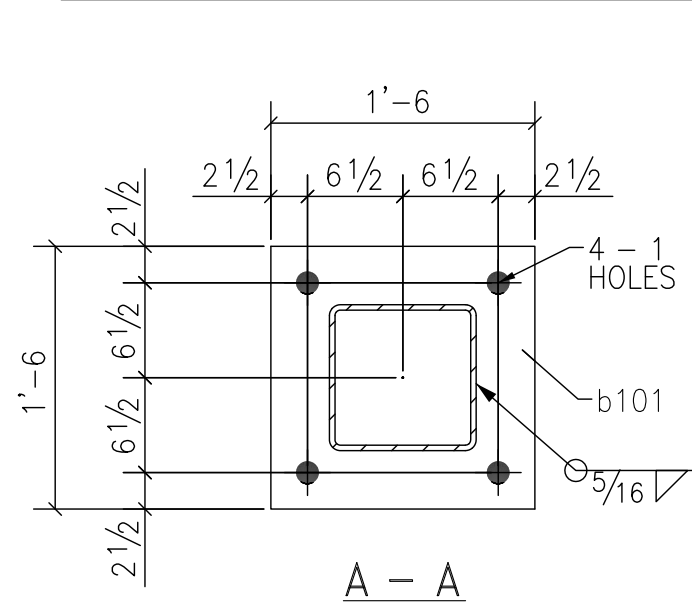


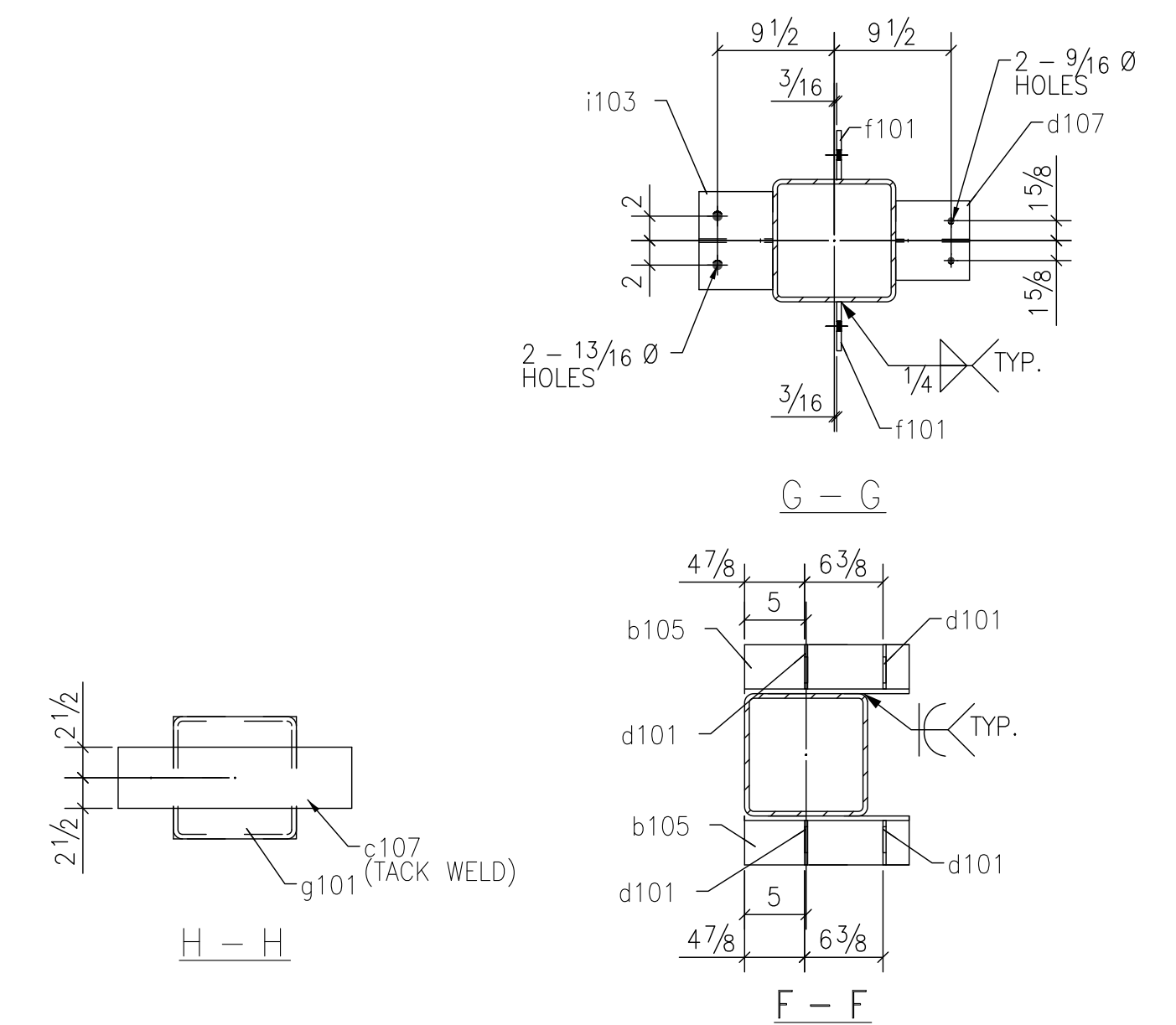
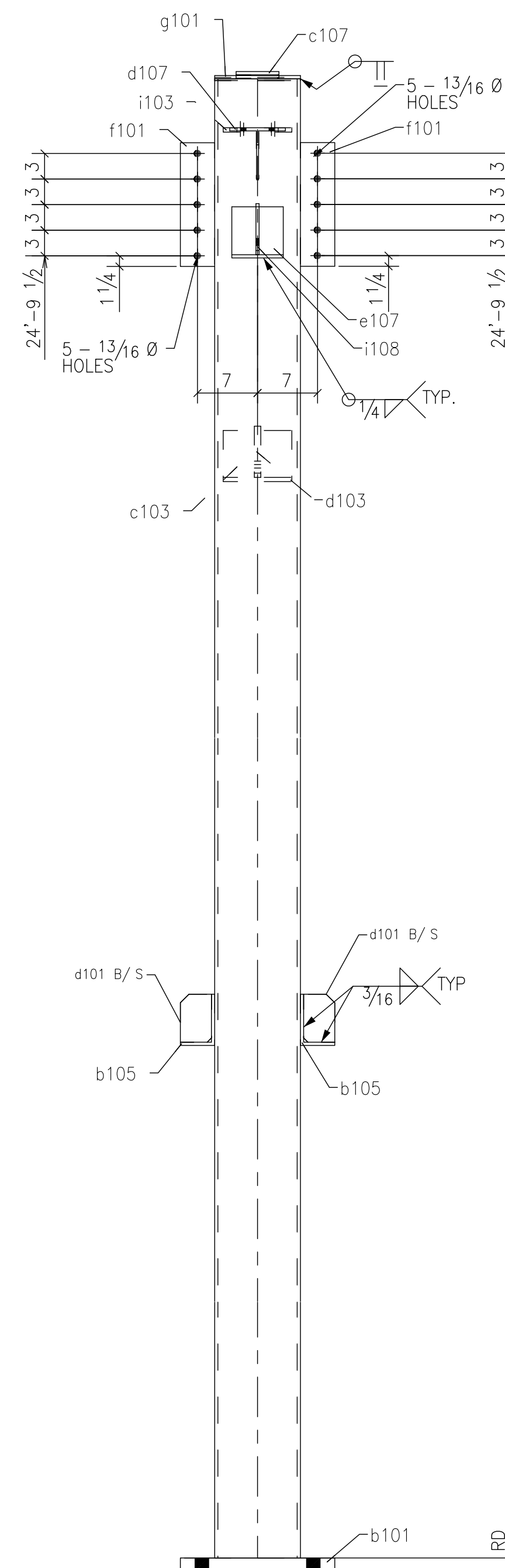
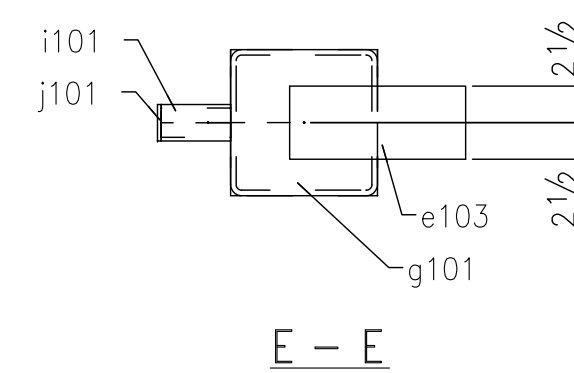
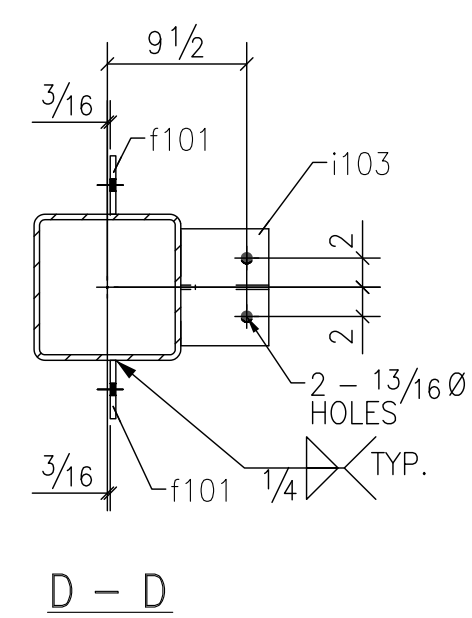
JOB No.		8408		BILL OF MATERIAL			SHEET 107	
Qty.	Unit	PC.	Minor	DESCRIPTION	LENGTH	STEEL	REMARKS	
1	1	107A		TS10X10X3/8	25'-4 1/4"	A500-GR.B		
1	1		b101	PL1 1/2"x18"	1'-6"	A36		
1	1		c103	L6X4X1/2	8"	A36		
4	4		d101	PL1/4"x3 5/8"	5 5/8"	A36		
1	1		d103	FL3/8"x6"	6"	A36		
1	1		e103	FL3/8"x5"	1'-0"	A36		
2	2		f101	FL3/8"x4"	1'-2 1/2"	A36		
1	1		g101	FL3/8"x10"	10"	A36		
1	1		h101	FL3/8"x4"	11 1/2"	A36		
1	1		i101	TS2-1/2X2-1/2X1/4	4 3/4"	A500-GR.B		
1	1		i103	WT6X20	6"	A992		
1	1		j101	FL1/4"x2 1/2"	2 1/2"	A36		
2	2		i101	L6X4X3/8	1'-7 1/4"	A36		
1	2	107B		TS10X10X3/8	26'-6 1/4"	A500-GR.B		
1	2		b101	PL1 1/2"x18"	1'-6"	A36		
2	4		b105	L6X4X3/8	1'-1 3/8"	A36		
1	2		c103	L6X4X1/2	8"	A36		
1	2		c107	FL3/8"x5"	1'-7"	A36		
4	8		d101	PL1/4"x3 5/8"	5 5/8"	A36		
1	2		d103	FL3/4"x6"	6"	A36		
1	2		d107	WT6X13	6"	A992		
1	2		e107	L6X4X3/8	6"	A36		
2	4		f101	FL3/8"x4"	1'-2 1/2"	A36		
1	2		g101	FL3/8"x10"	10"	A36		
1	2		i103	WT6X20	6"	A992		
1	2		i108	FL3/8"x6"	6"	A36		



ONE - COLUMN - 107A



2 - COLUMNS - 107B



ASSM. MK.	TOTAL QTY	UNIT QTY	FIELD BOLTS	LENGTH	REMARKS
107A	2	2	3/4" DIA A307	2"	
107B	4	2	1/2" DIA A307	1 1/2"	
107B	4	2	3/4" DIA A307	2"	

SAMPLE DRAWING