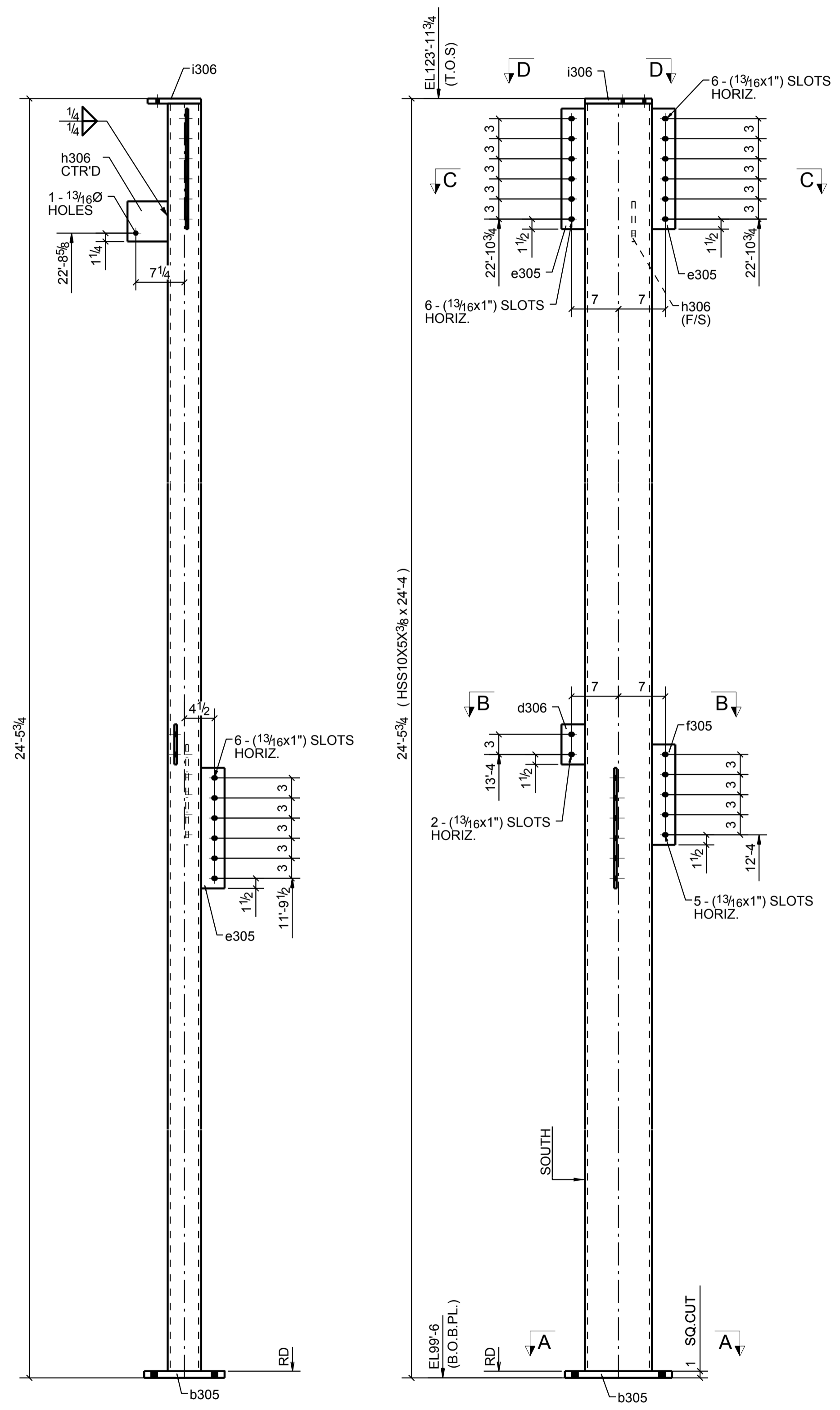
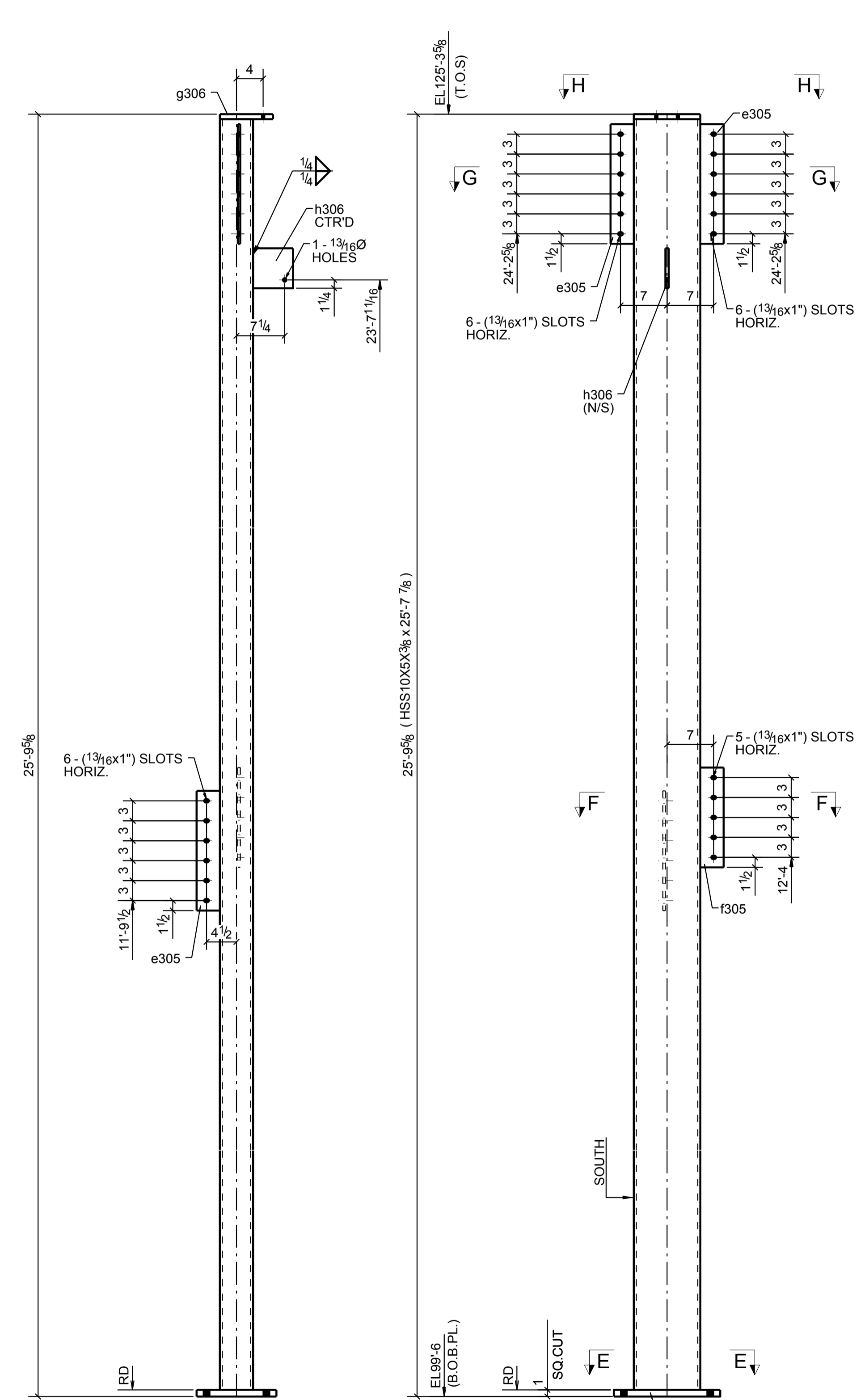


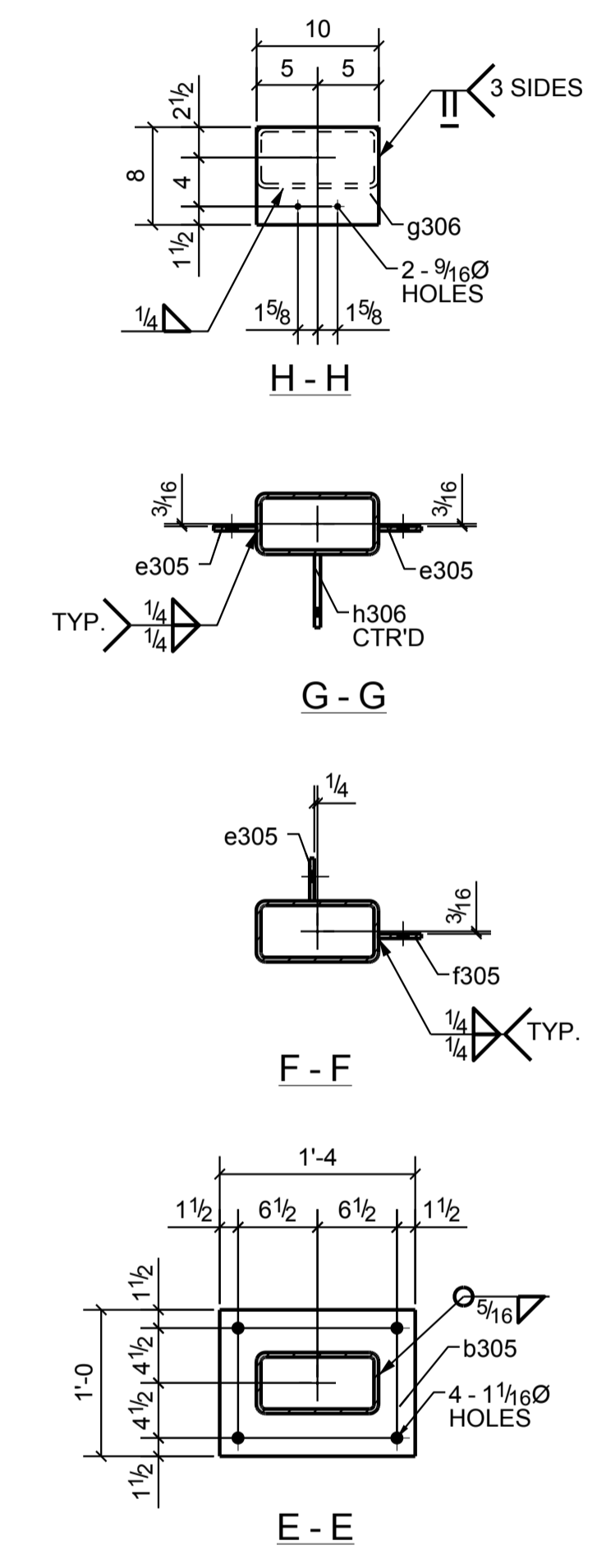
JOB No.		8598		BILL OF MATERIAL				SHEET		306	
Qty.	Unit	PC.	Mark	DESCRIPTION	LENGTH	STEEL	GRADE	REMARKS			
1	1	306A		HSS10X5X3/8	24'-4"	A500-GR.B					
1	1		b305	FL1'X12"	1'-4"	A36					
1	1		d306	FL3/8"X3 1/2"	6"	A36					
3	3		e305	FL3/8"X3 1/2"	1'-6"	A36					
1	1		f305	FL3/8"X3 1/2"	1'-3"	A36					
1	1		h306	FL1/2"X6"	6"	A36					
1	1		i306	FL3/4"X8"	10"	A36					
1	1	306B		HSS10X5X3/8	25'-7 7/8"	A500-GR.B					
1	1		b305	FL1'X12"	1'-4"	A36					
3	3		e305	FL3/8"X3 1/2"	1'-6"	A36					
1	1		f305	FL3/8"X3 1/2"	1'-3"	A36					
1	1		g306	FL3/4"X8"	10"	A36					
1	1		h306	FL1/2"X6"	6"	A36					



ONE - COLUMN - 306A



ONE - COLUMN - 306B



ASSM. MK.	TOTAL QTY	UNIT QTY	FIELD BOLTS	LENGTH	REMARKS
306A	2	2	1/2" DIA A307	2"	
306B	2	2	1/2" DIA A307	2"	

SAMPLE DRAWING