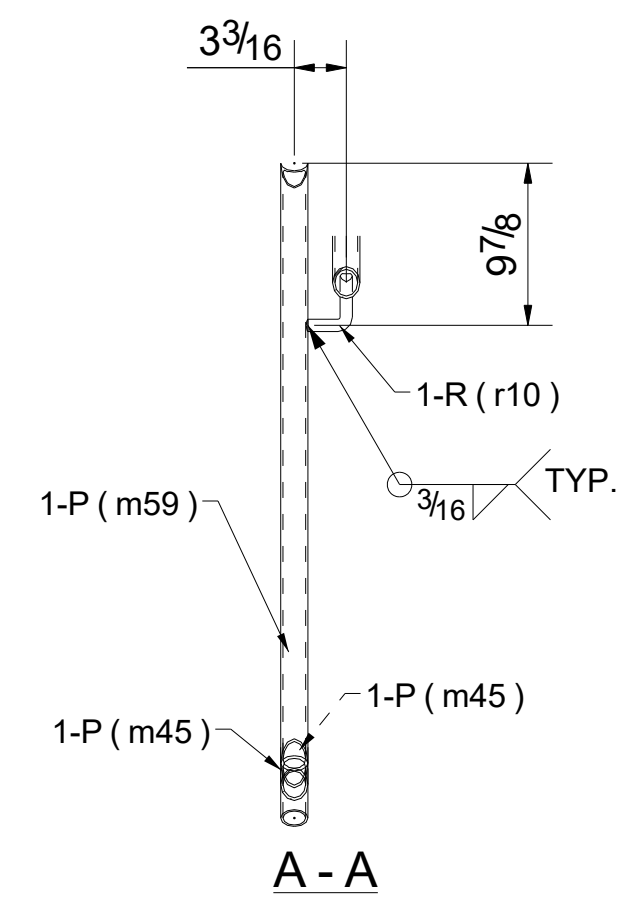
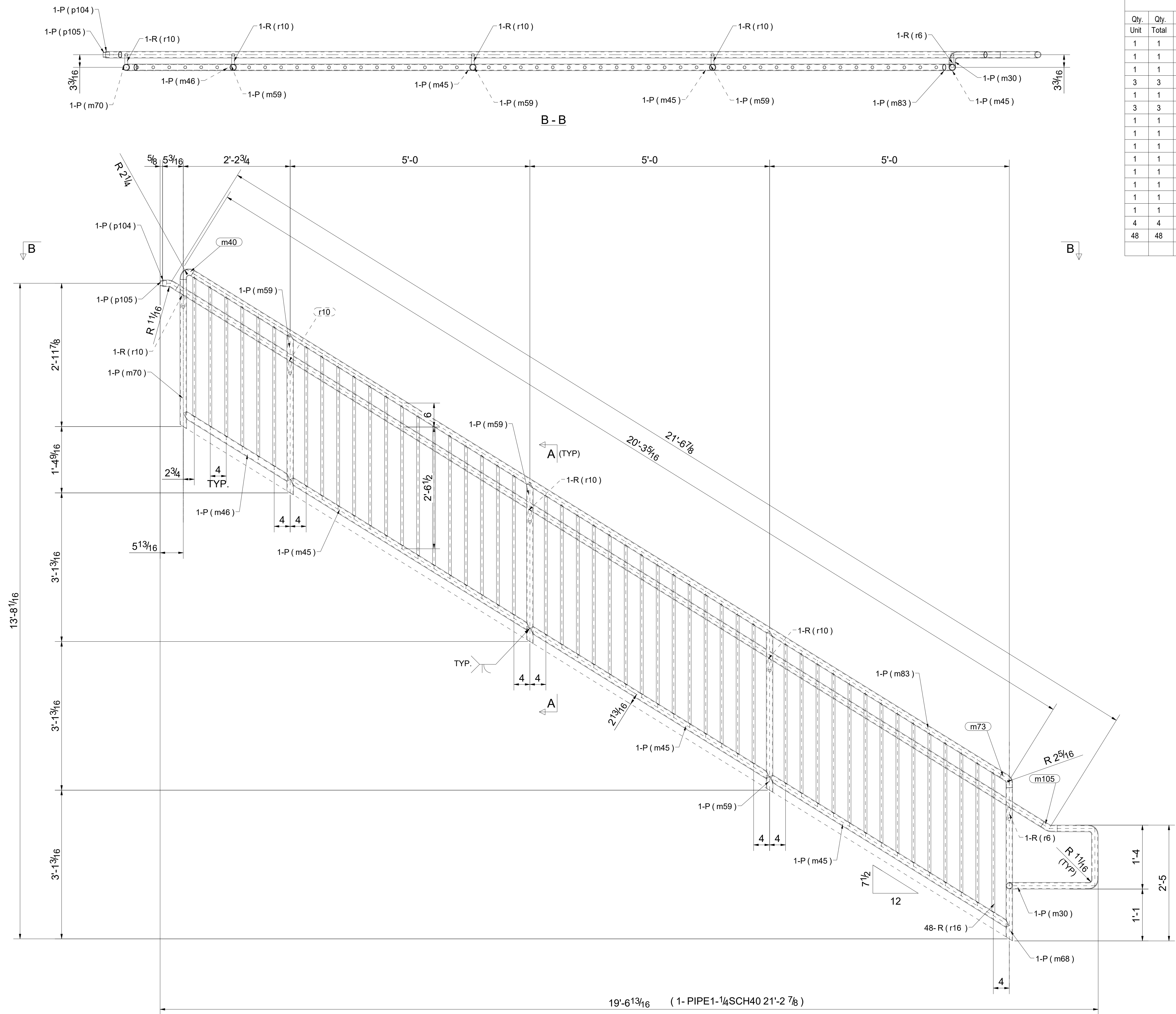


**BILL OF MATERIAL**

Qty. Unit	Qty. Total	Description	Piece Mark	Length	Minor Mark	Steel Grade	Unit Wt.	Total Wt.	Remarks
1	1	PIPE1-1/4SCH40	46HR1	21'-2 7/8"		A53	46.1	46.1	
1	1	PIPE1-1/4SCH40		3'-10 3/8"	m30	A53	8.8	8.8	
1	1	PIPE1-1/4SCH40		0'-3 9/16"	m40	A53	0.7	0.7	
3	3	PIPE1-1/4SCH40		5'-10 5/8"	m45	A53	13.4	40.1	
1	1	PIPE1-1/4SCH40		2'-7 1/2"	m46	A53	6.0	6.0	
3	3	PIPE1-1/4SCH40		3'-4 3/8"	m59	A53	7.5	22.6	
1	1	PIPE1-1/4SCH40		3'-2 3/8"	m68	A53	7.2	7.2	
1	1	PIPE1-1/4SCH40		3'-1 3/8"	m70	A53	7.0	7.0	
1	1	PIPE1-1/4SCH40		0'-4 1/4"	m73	A53	0.8	0.8	
1	1	PIPE1-1/4SCH40		19'-10 1/8"	m83	A53	45.1	45.1	
1	1	PIPE1-1/4SCH40		0'-4"	m105	A53	0.8	0.8	
1	1	PIPE1-1/4SCH40		0'-3 15/16"	p104	A53	0.7	0.7	
1	1	PIPE1SCH40		0'-1 5/8"	p105	A53	0.2	0.2	
1	1	ROD3/4"		0'-5 1/2"	r6	A36	0.7	0.7	
4	4	ROD3/4"		0'-4 3/4"	r10	A36	0.6	2.3	
48	48	ROD3/4"		2'-11 1/16"	r16	A36	3.9	187.7	



**ONE - HANDRAIL - 46HR1**