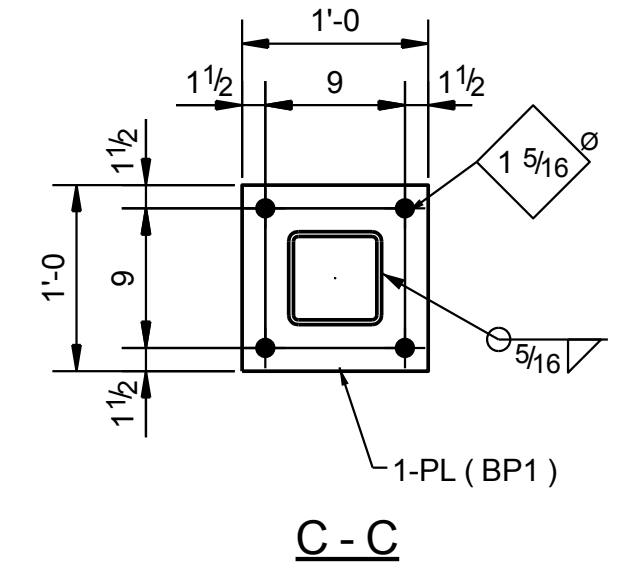
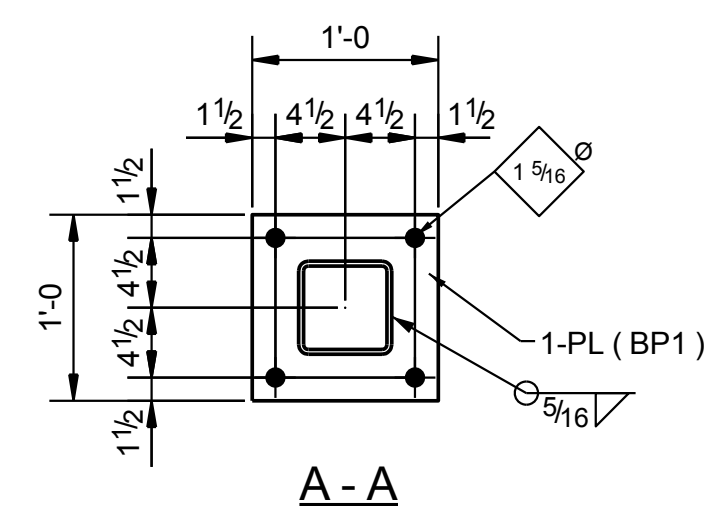
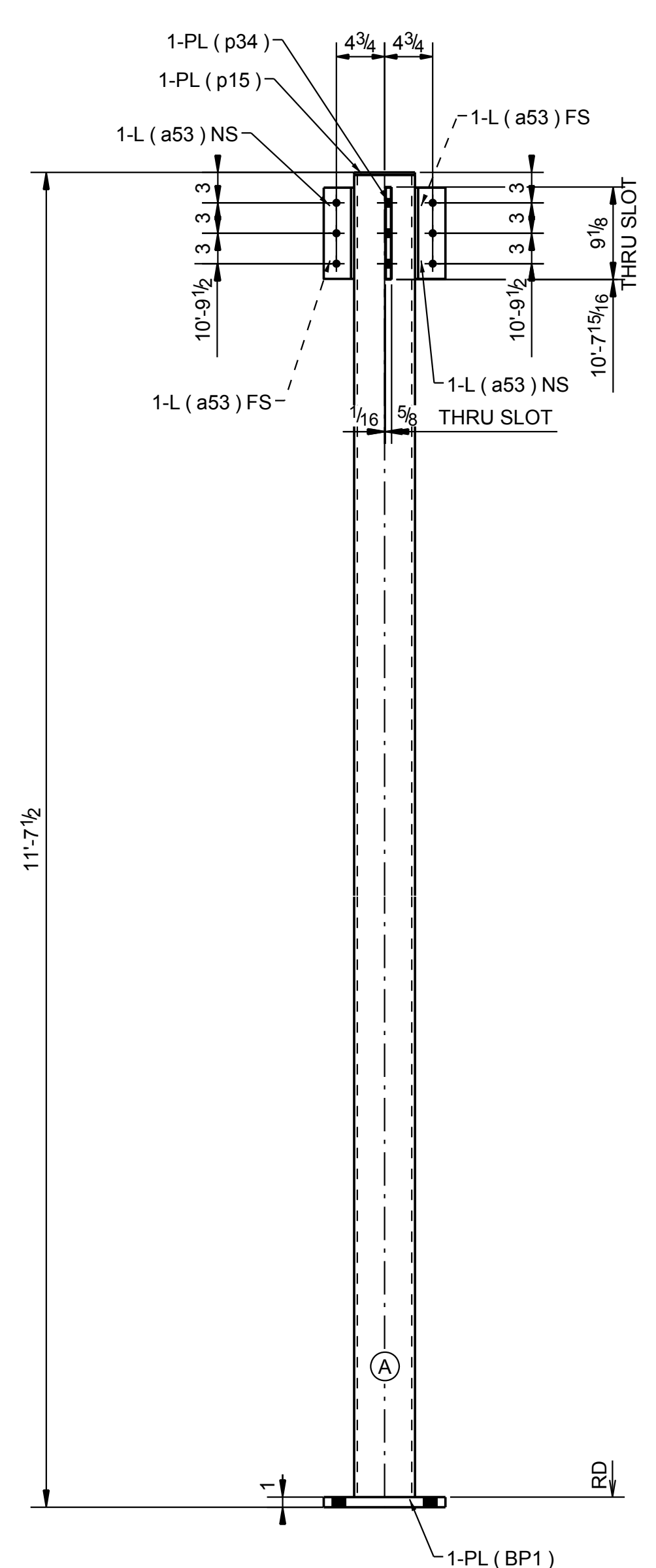
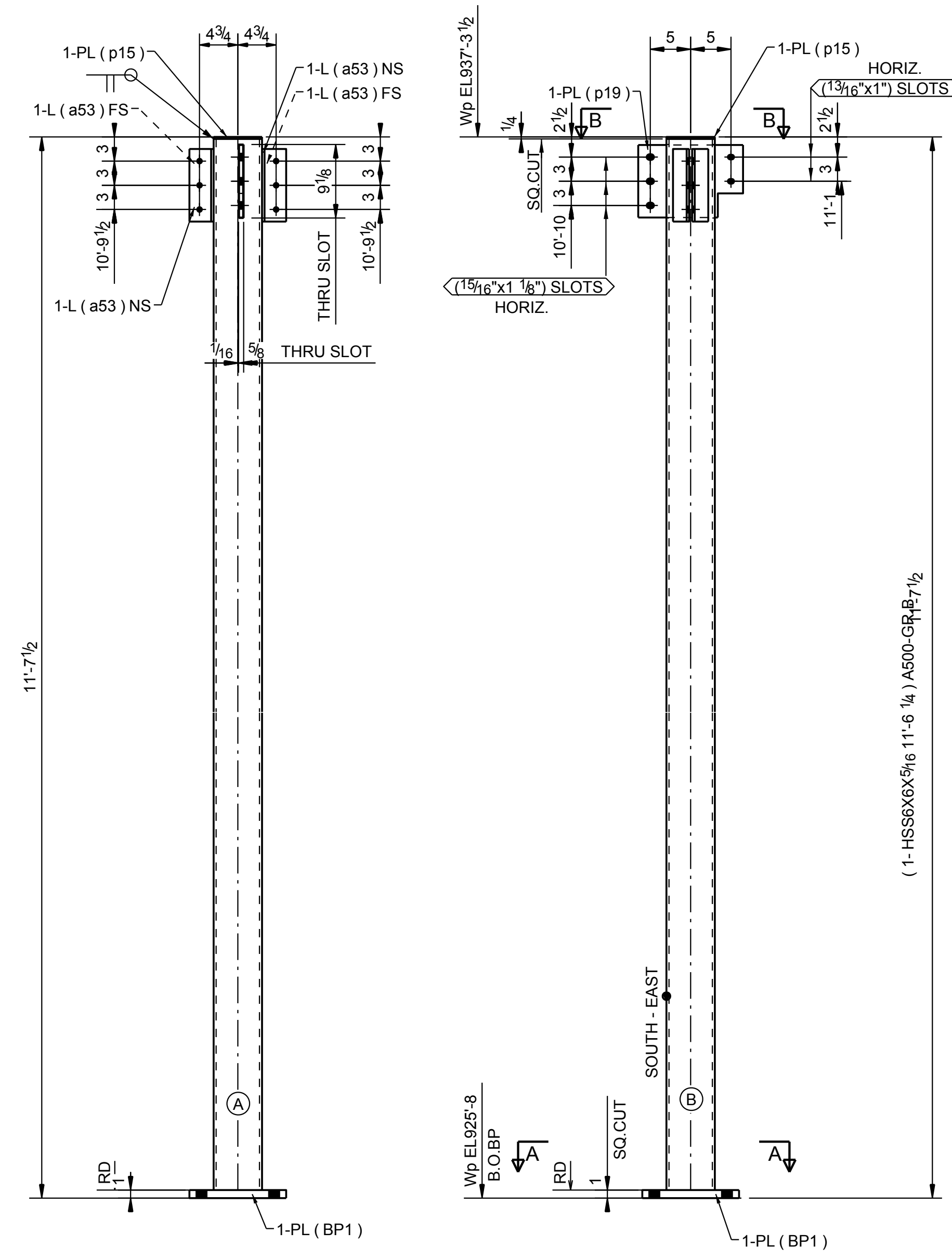
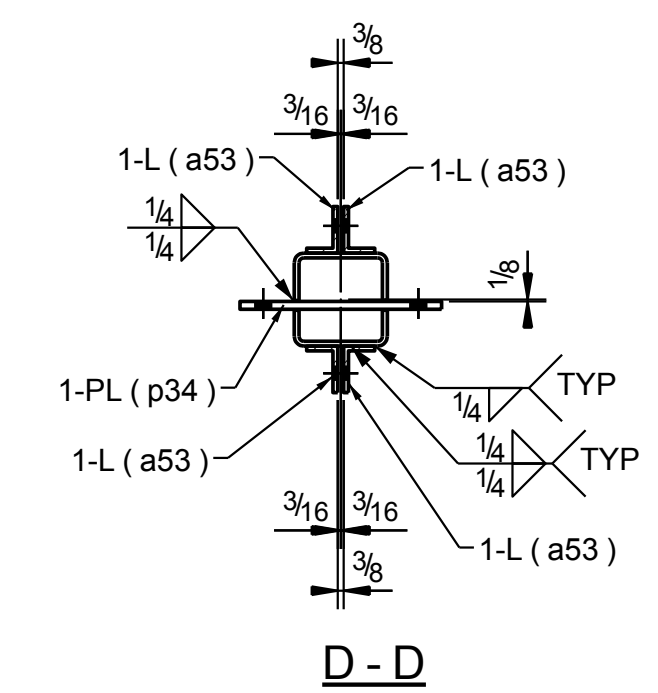
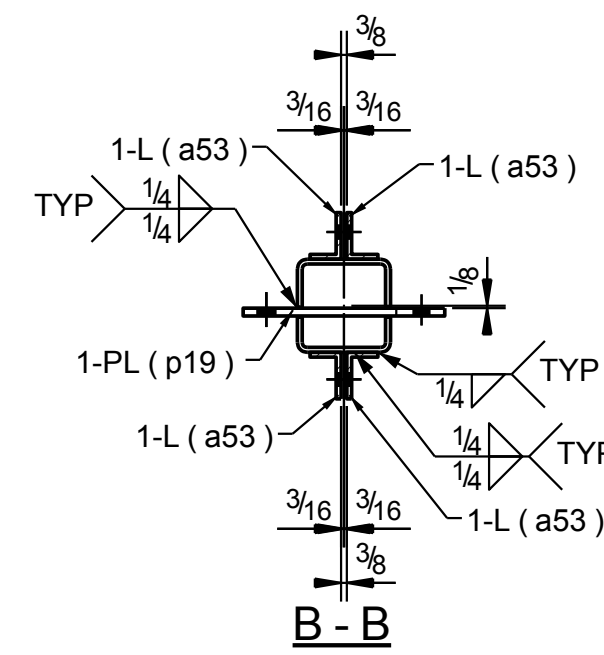


SECTOR			BILL OF MATERIAL					
XX	XX	XX	MARK	NO.	MATERIAL	FT. - IN.	REMARKS	WGT.
1								
2								
3			5C1	1	COLUMN			
4			5C1	1	HSS6X6X5/16	11'-6 1/4"		252
5			BP1	1	PL 1"X12"	1'-0"		41
6			a53	4	L3X2X5/16	0'-9"		15
7			p15	1	PL 1/4"X6"	0'-6"		3
8			p19	1	PL 1/2"X9"	1'-1"		15
9								
10								
11			5C2	2	COLUMNS			
12			5C2	2	HSS6X6X5/16	11'-6 1/4"		504
13			BP1	2	PL 1"X12"	1'-0"		82
14			a53	8	L3X2X5/16	0'-9"		30
15			p15	2	PL 1/4"X6"	0'-6"		5
16			p34	2	PL 1/2"X9"	1'-1"		33
17								
18								
19								
20								
21								
22								
23								
24								
25								
26								
27								
28								
29								
30								
31								
32								
33								
34								
35								
36								
37								
38								
39								
40								
41								
42								
43								
44								
45								



GRID LOCATION	BOTTOM ELEVATION
1/C	925'-8"

GRID LOCATION	BOTTOM ELEVATION
2/C	925'-8"
3/C	925'-8"

- NOTES**
1. OPEN HOLES 13/16" UNLESS NOTED
 2. ALL EDGE DISTANCES ARE 1 1/4 UNLESS NOTED.
 3. SHOP PAINT - 1 S/C TNEMEC U.N.O.
 4. CLEANING SPEC. = SSPC-SP3
 5. ALL WELDS E70XX
 - 6.

PRINT RECORD				REVISIONS			
DATE	NO.	USE	DATE	BY	DESCRIPTION	DATE	DESCRIPTION
02/06/2017	0	APP.	02/06/2017	GM	ISSUED FOR FABRICATION		
09/22/2016	A	FIN. APP.	09/26/2016	GM	ISSUED FOR APPROVAL		
11/17/2016	B	SHOP	11/17/2016	GM	ISSUED FOR APPROVAL		
		FIELD					
		ERECTOR					

- SHOP NOTES:**
1. ALL STUBS FROM END OF CLIP L.
 2. STANDARD CLIP ANGLES HAVE 0x1 HORIZ. SLOTS IN O.S.L. U.N.O.
 3. N.P. = NO PAINT WITHIN 3" OF HOLES.

REF. DWG. E1

APPROVAL/REVIEW AUTHORITY:
PLEASE REVIEW THIS DRAWING CAREFULLY
IT REPRESENTS OUR INTERPRETATION OF THE INTENT OF THE CONTRACT DOCUMENTS. HOWEVER, THE STEEL FABRICATOR AND THE STRUCTURAL STEEL DETAILER ASSUME NO RESPONSIBILITY FOR THE DESIGN OF THE INFORMATION SHOWN ON THIS DRAWING. THIS IS THE RESPONSIBILITY OF THE BUYER.
UNLESS NOTED TO THE CONTRARY, ON THIS DRAWING, WHEN IT IS RETURNED FROM APPROVAL IT WILL BE ASSUMED THAT ALL INFORMATION SHOWN HEREIN HAS THE AFFIRMATION OF THE APPROVAL AUTHORITY.
SUBSEQUENT CHANGES TO INFORMATION SHOWN ON THESE DRAWINGS AFTER FIRST SUBMISSION WILL BE CONSIDERED AS CONTRACT CHANGES.