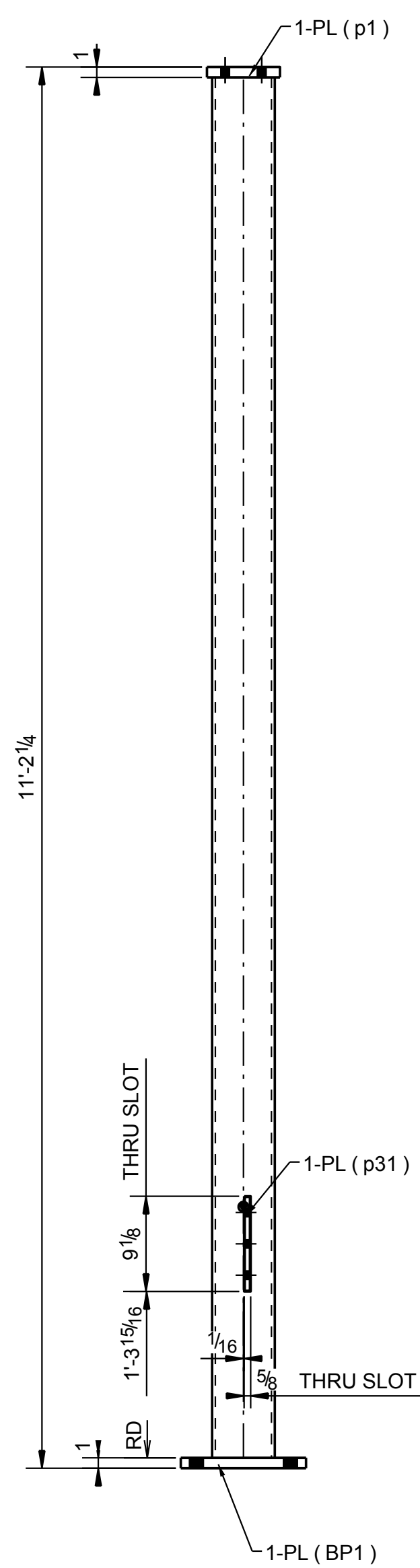


ONE - COLUMN - 6C1

GRID LOCATION	BOTTOM ELEVATION
4/C.2	925'-8"

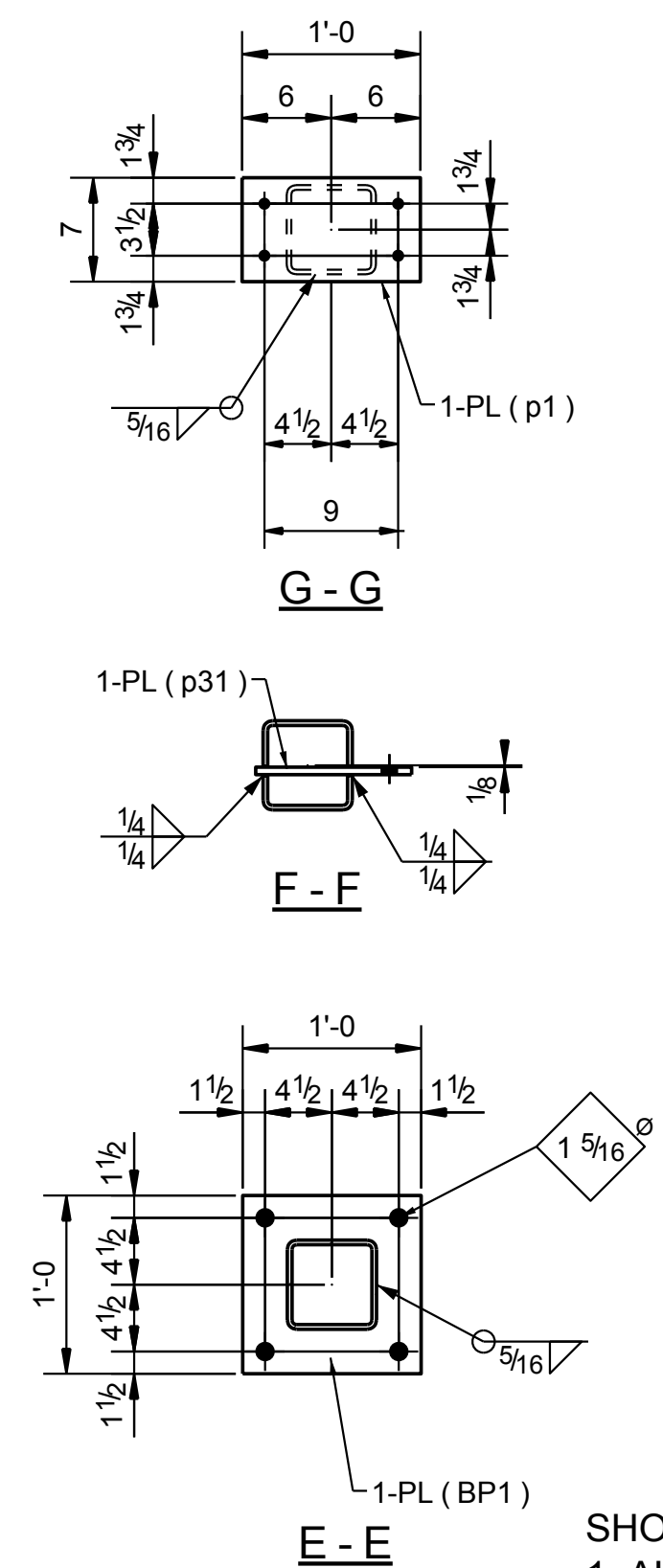


2 - COLUMNS - 6C2

GRID LOCATION	BOTTOM ELEVATION
2/D	935'-0"
<1/G-F	935'-0"

SECTOR			BILL OF MATERIAL					
XX	XX	XX	MARK	NO.	MATERIAL	FT. - IN.	REMARKS	WGT.
1								
2			6C1	1	COLUMN			
3			6C1	1	HSS6X6X5/16	31'-7 1/4"		692
4			BP1	1	PL 1"X12"	1'-0"		41
5			a52	2	L3X2X5/16	0'-6"		5
6			p15	1	PL 1/4"X6"	0'-6"		3
7			p20	1	PL 1/2"X9"	1'-1"		15
8			p34	2	PL 1/2"X9"	1'-1"		33
9								
10								
11								
12			6C2	2	COLUMNS			
13			6C2	2	HSS6X6X5/16	11'-0 1/4"		482
14			BP1	2	PL 1"X12"	1'-0"		82
15			p1	2	PL 1"X7"	1'-0"		48
16			p31	2	PL 1/2"X9"	0'-10 1/2"		27
17								
18								
19								
20								
21								
22								
23								
24								
25								
26								
27								
28								
29								
30								
31								
32								
33								
34								
35					FIELD BOLTS			
36				8	5/16" Ø A325N	2 1/2"		
37								
38								
39								
40								
41								
42								
43								
44								
45								

APPROVAL/REVIEW AUTHORITY:  
PLEASE REVIEW THIS DRAWING CAREFULLY  
IT REPRESENTS OUR INTERPRETATION OF THE INTENT OF THE CONTRACT DOCUMENTS. HOWEVER, THE STEEL FABRICATOR AND THE STRUCTURAL STEEL DETAILER ASSUME NO RESPONSIBILITY FOR THE DESIGN OF THE INFORMATION SHOWN ON THIS DRAWING. THIS IS THE RESPONSIBILITY OF THE BUYER. UNLESS NOTED TO THE CONTRARY, ON THIS DRAWING, WHEN IT IS RETURNED FROM APPROVAL IT WILL BE ASSUMED THAT ALL INFORMATION SHOWN HEREIN HAS THE AFFIRMATION OF THE APPROVAL AUTHORITY. SUBSEQUENT CHANGES TO THESE DRAWINGS AFTER FIRST SUBMISSION WILL BE CONSIDERED AS CONTRACT CHANGES.



- SHOP NOTES:
1. ALL STUBS FROM END OF CLIP L.
  2. STANDARD CLIP ANGLES HAVE Øx1 HORIZ. SLOTS IN O.S.L. U.N.O.
  3. N.P. = NO PAINT WITHIN 3" OF HOLES.

REF. DWG. E1

STRUCTURAL STEEL SHAPES: ASTM A992  
STEEL ANCHOR RODS: ASTM F1554 GRADE 36  
STEEL PLATES AND ANGLES: ASTM A36 GRADE 36  
ALL STRUCTURAL STEEL TUBES: ASTM A500 GRADE B  
ALL STRUCTURAL STEEL PIPES: ASTM A53 GRADE B  
ALL STRUCTURAL ANCHOR BOLT: ASTM F1554 GRADE 36

- NOTES
1. OPEN HOLES 13/16" UNLESS NOTED
  2. ALL EDGE DISTANCES ARE 1 1/4 UNLESS NOTED.
  3. SHOP PAINT - 1 S/C TNEMEC U.N.O.
  4. CLEANING SPEC. = SSPC-SP3
  5. ALL WELDS E70XX
  - 6.

PRINT RECORD				REVISIONS			
DATE	NO.	USE		DATE	BY	DESCRIPTION	
02/06/2017	0	APP.		02/06/2017	GM	ISSUED FOR FABRICATION	
09/22/2016	A	FIN. APP.		09/26/2016	GM	ISSUED FOR APPROVAL	
11/17/2016	B	SHOP		11/17/2016	GM	ISSUED FOR APPROVAL	
		FIELD					
		ERECTOR					