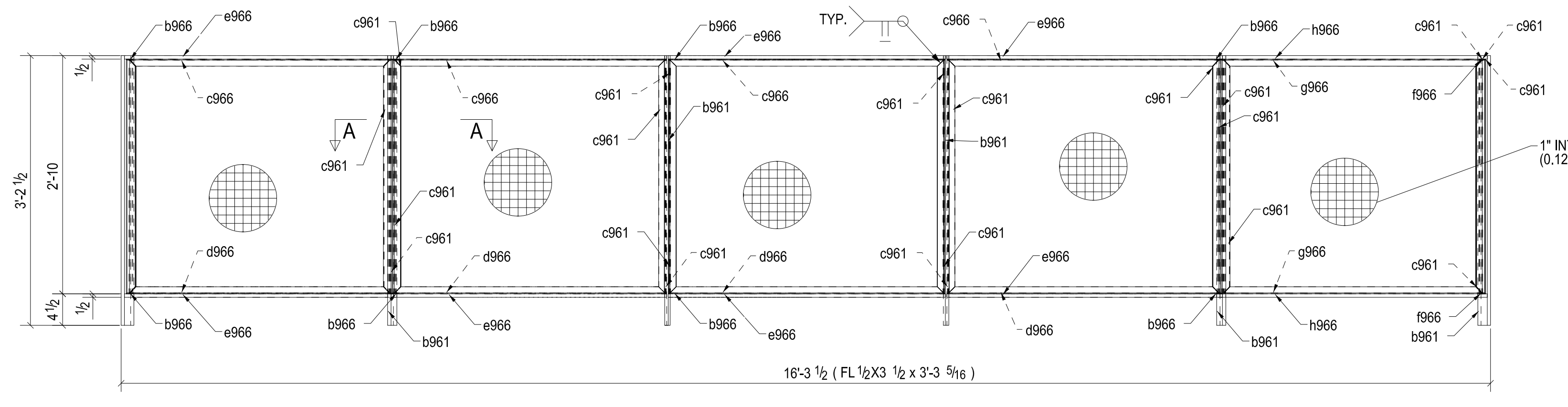
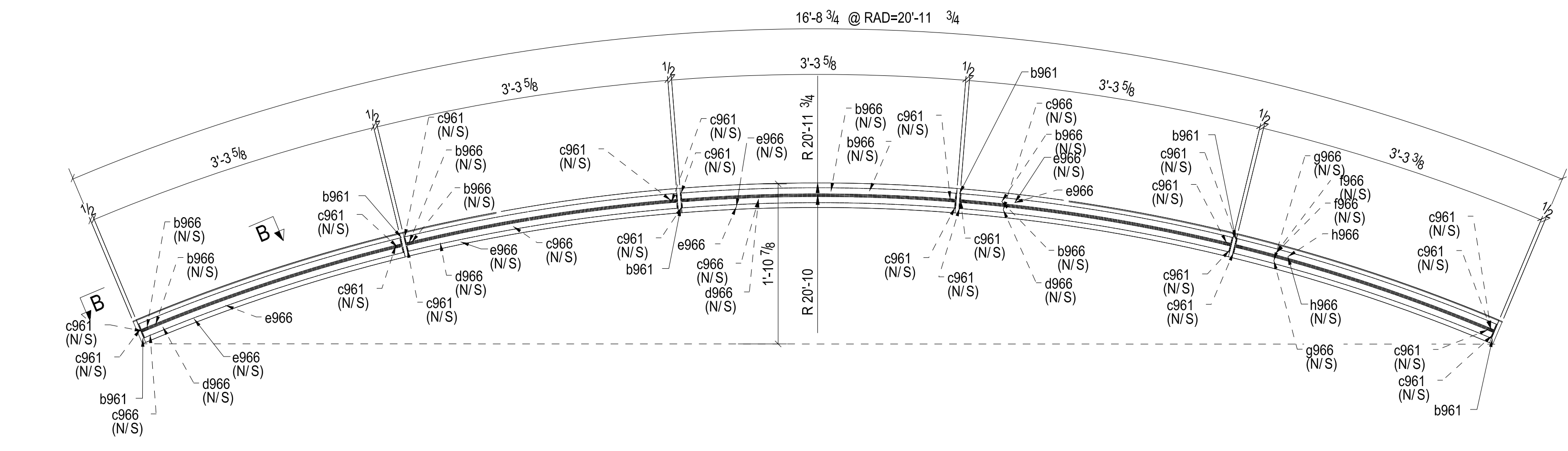
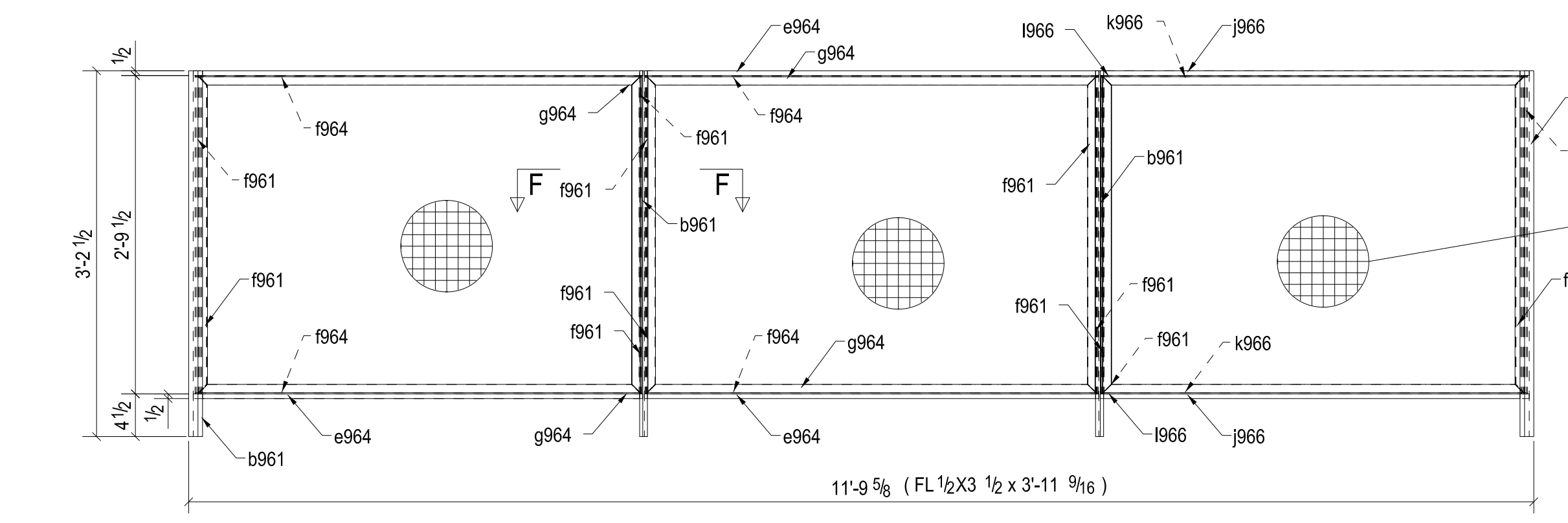
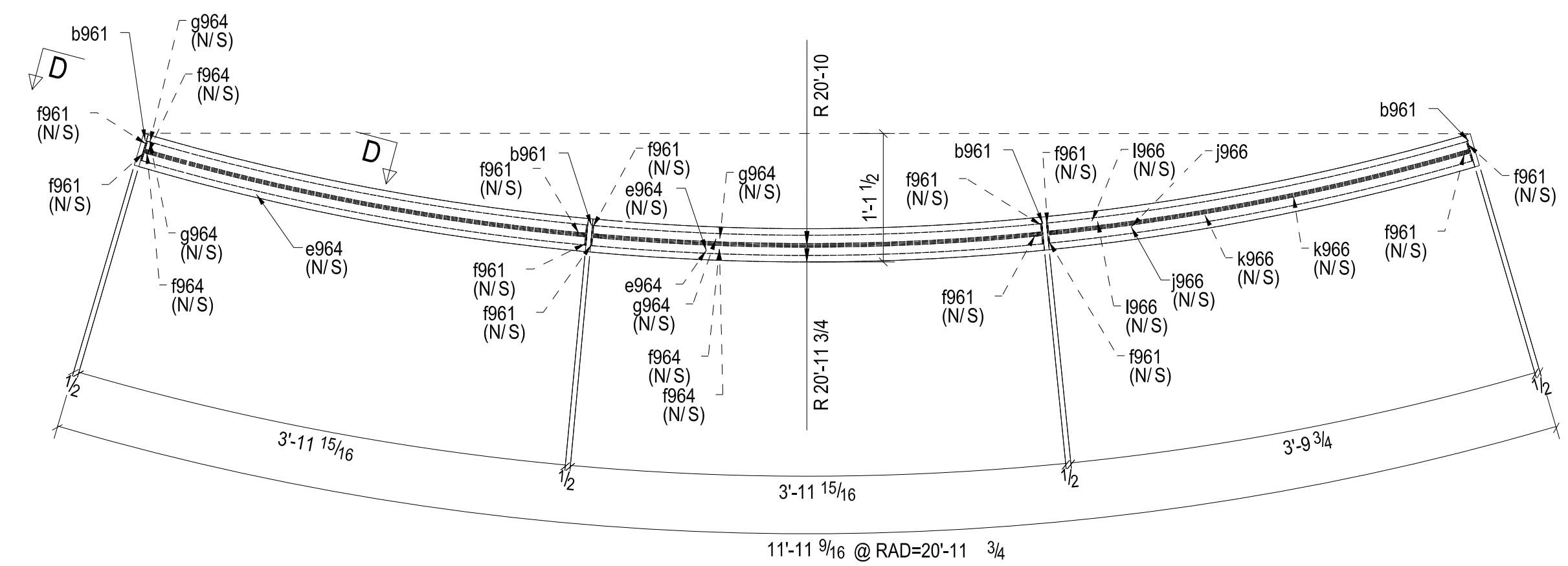
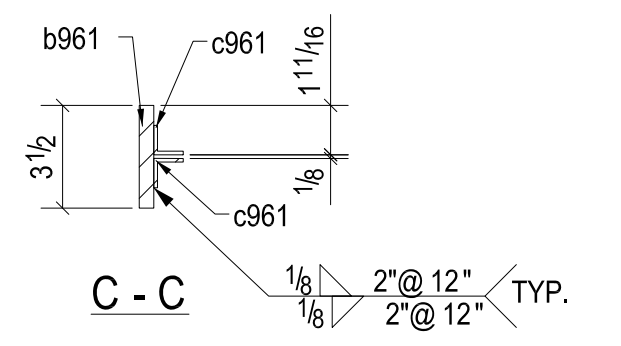
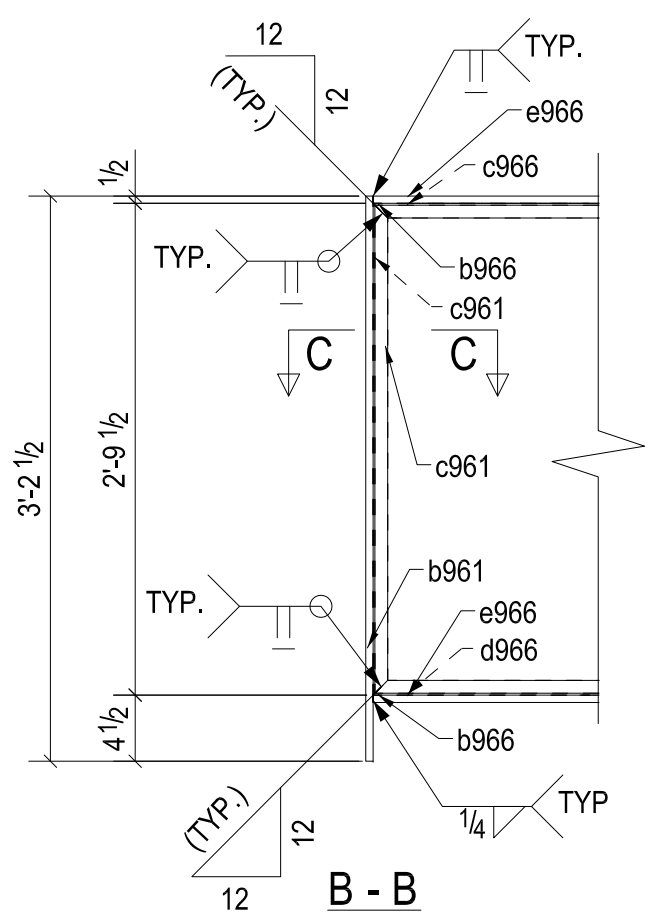
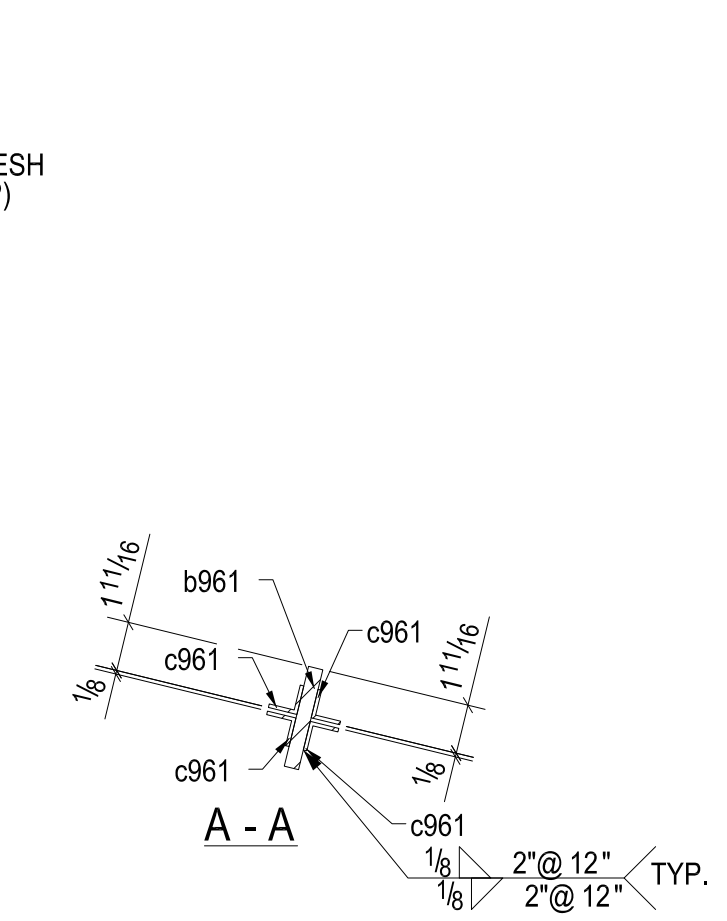


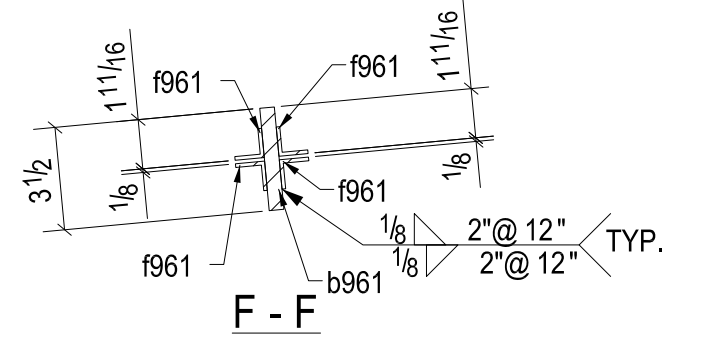
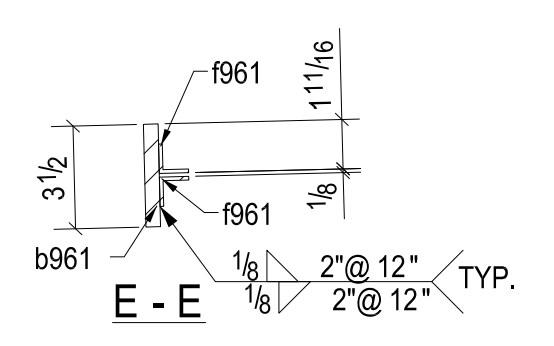
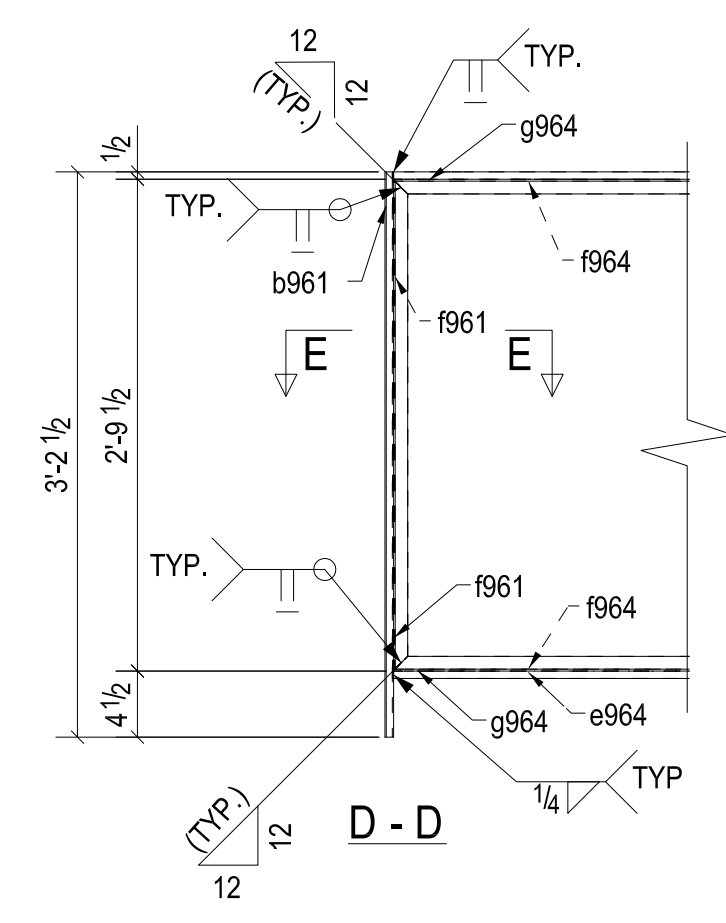
JOB No.		8423		BILL OF MATERIAL			SHEET		966	
Qty.	Unit	PC. MARK	Minor Mark	DESCRIPTION	LENGTH	STEEL GRADE	REMARKS			
1	1	966A		FL1/2"x3 1/2"	3'-3 5/16"	A36				
6	6		b961	FL1/2"x3 1/2"	3'-2 1/2"	A36				
8	8		b966	L1X1X1/8	3'-3 7/16"	A36				
22	22		c961	L1X1X1/8	2'-9 1/2"	A36				
4	4		c966	L1X1X1/8	3'-3 1/4"	A36				
4	4		d966	L1X1X1/8	3'-3 1/4"	A36				
7	7		e966	FL1/2"x3 1/2"	3'-3 5/16"	A36				
2	2		f966	L1X1X1/8	3'-3 3/16"	A36				
2	2		g966	L1X1X1/8	3'-3"	A36				
2	2		h966	FL1/2"x3 1/2"	3'-3 1/16"	A36				
1	1	966B		FL1/2"x3 1/2"	3'-11 9/16"	A36				
4	4		b961	FL1/2"x3 1/2"	3'-2 1/2"	A36				
3	3		e964	FL1/2"x3 1/2"	3'-11 9/16"	A36				
12	12		f961	L1X1X1/8	2'-9 1/2"	A36				
4	4		f964	L1X1X1/8	3'-11 1/16"	A36				
4	4		g964	L1X1X1/8	3'-11 1/2"	A36				
2	2		j966	FL1/2"x3 1/2"	3'-9 3/8"	A36				
2	2		k966	L1X1X1/8	3'-9 1/2"	A36				
2	2		l966	L1X1X1/8	3'-9 5/16"	A36				



ONE - GUARDRAIL - 966A



ONE - GUARDRAIL - 966B



SAMPLE DRAWING