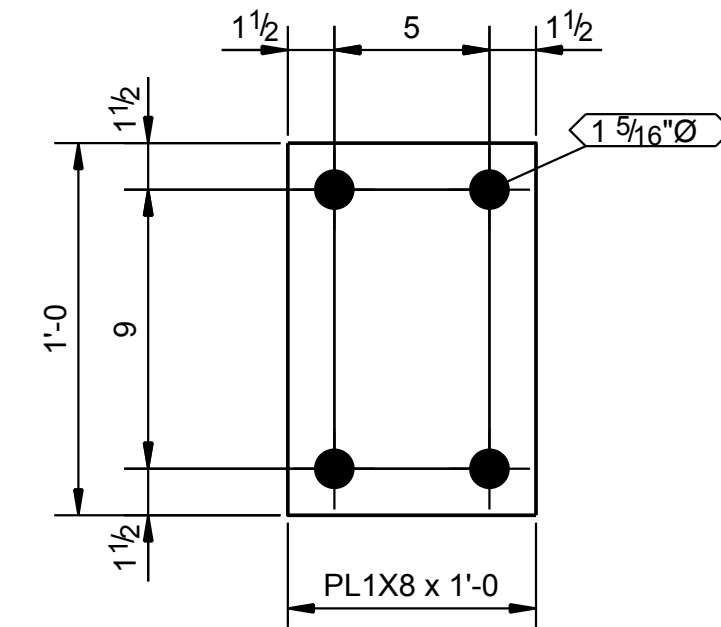
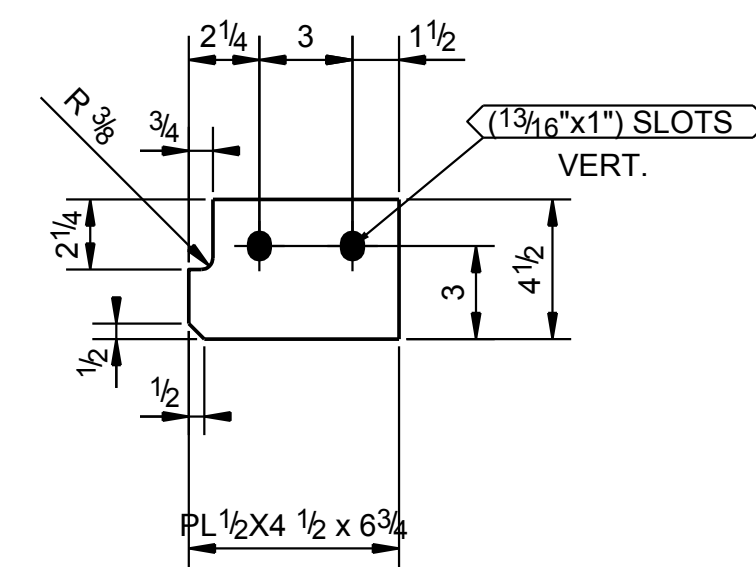


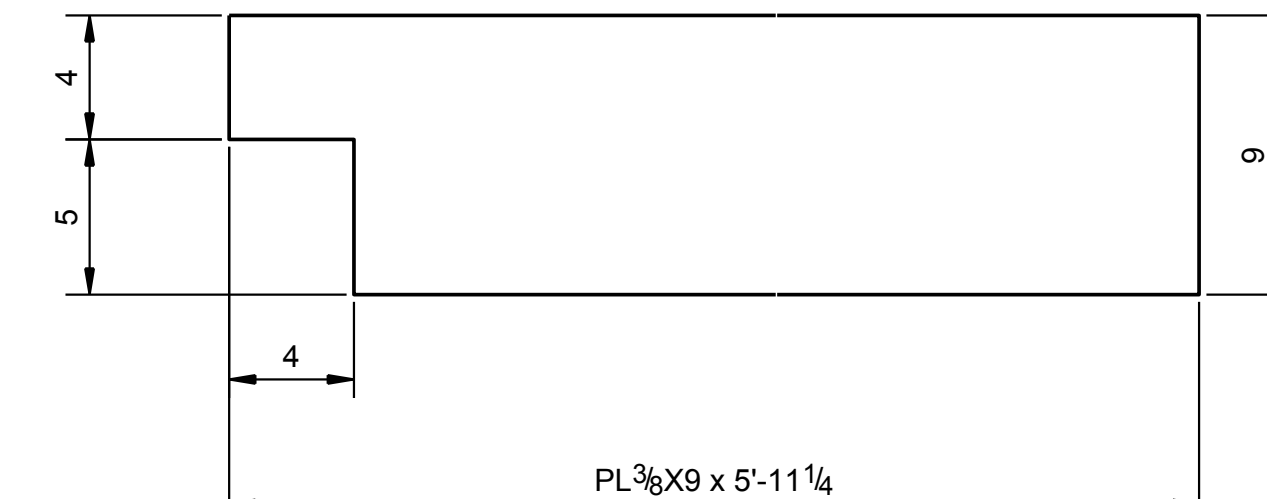
8 - BASE PLATES - BP1



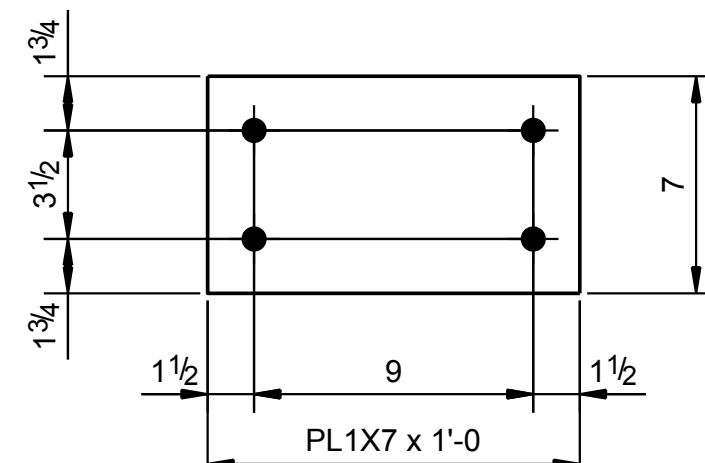
3 - BASE PLATES - BP2



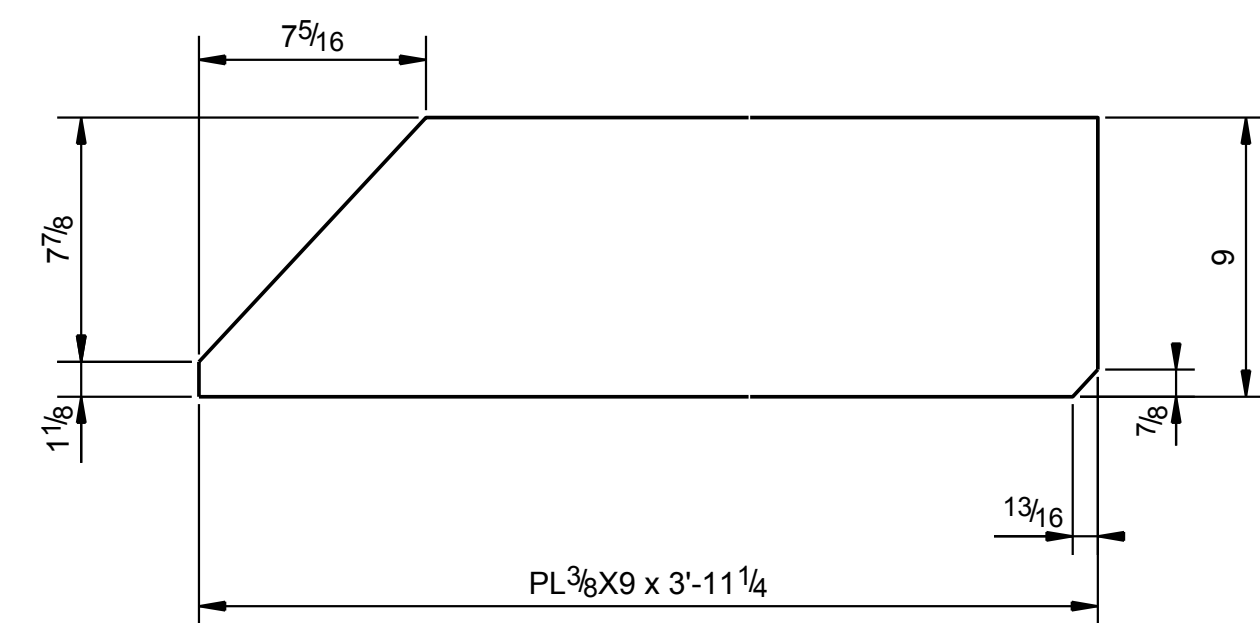
2 - PLATES - p18



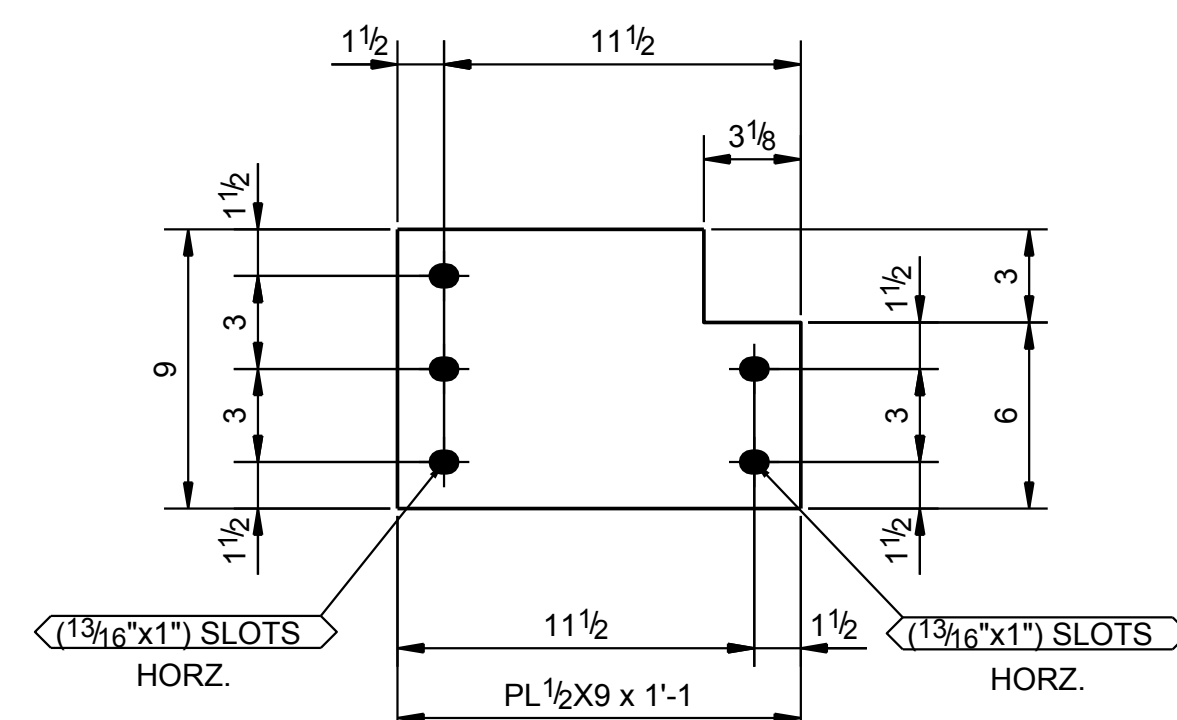
ONE - PLATE - p5



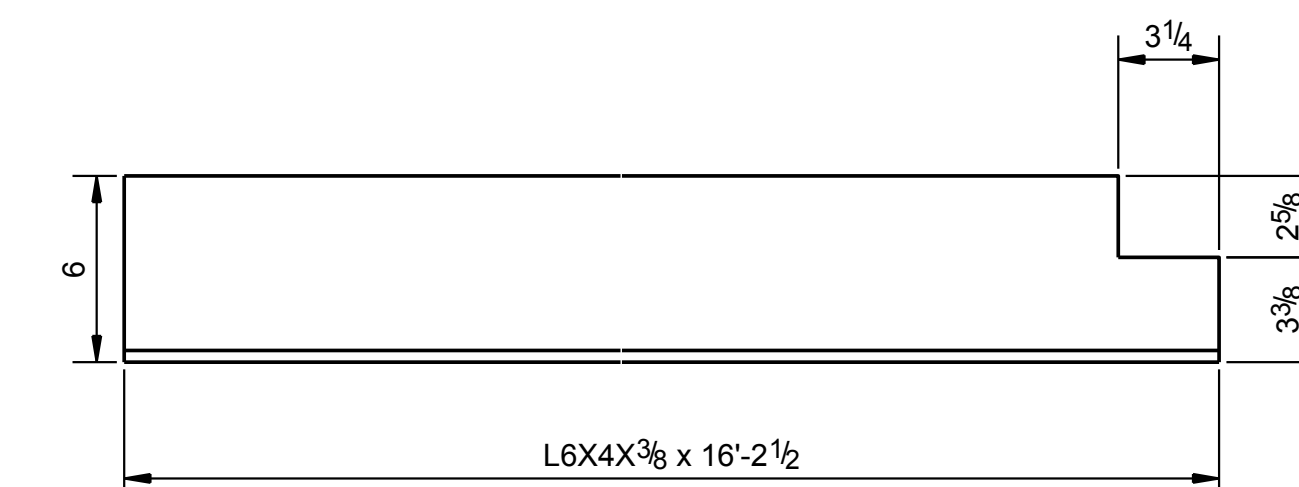
4 - PLATES - p1



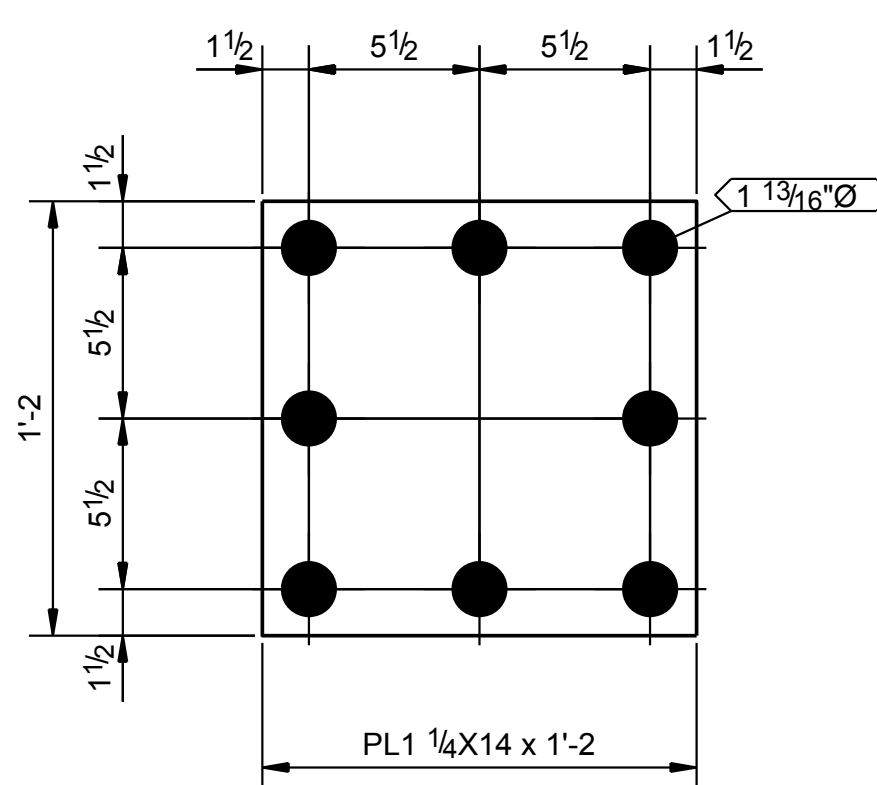
ONE - PLATE - p4



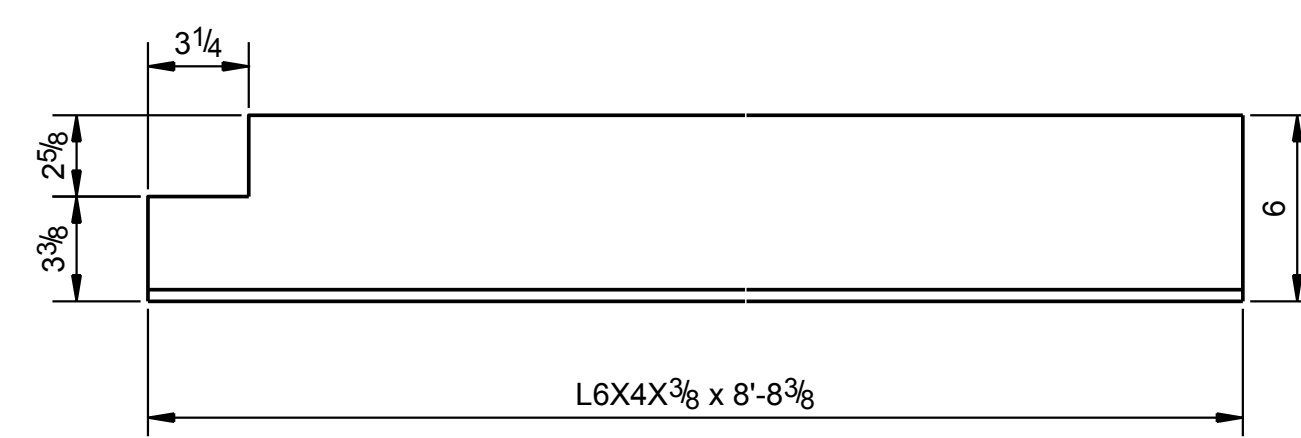
ONE - PLATE - p20



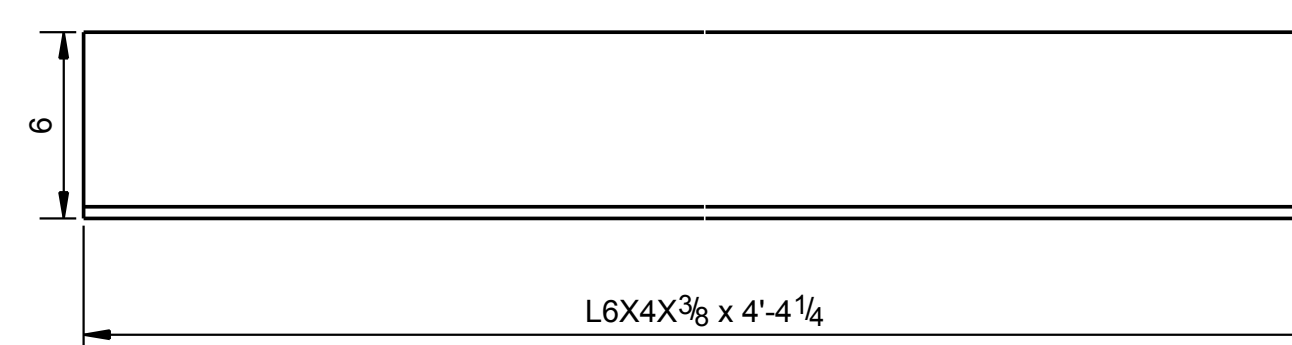
ONE - ANGLE - a39



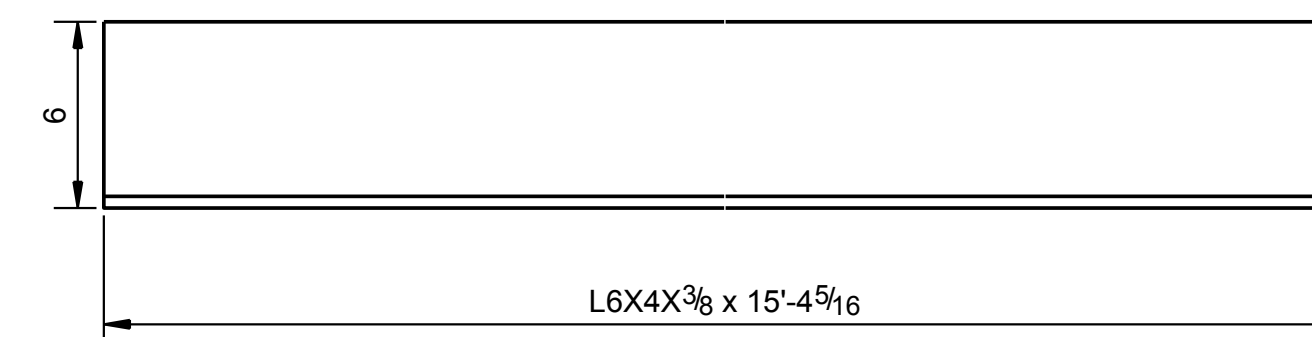
2 - BASE PLATES - BP3



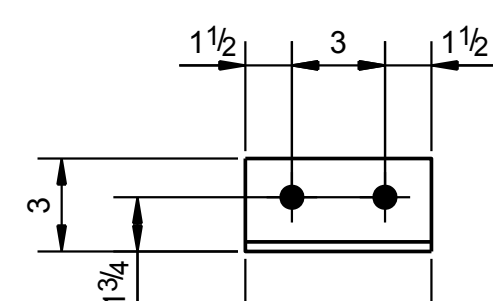
ONE - ANGLE - a40



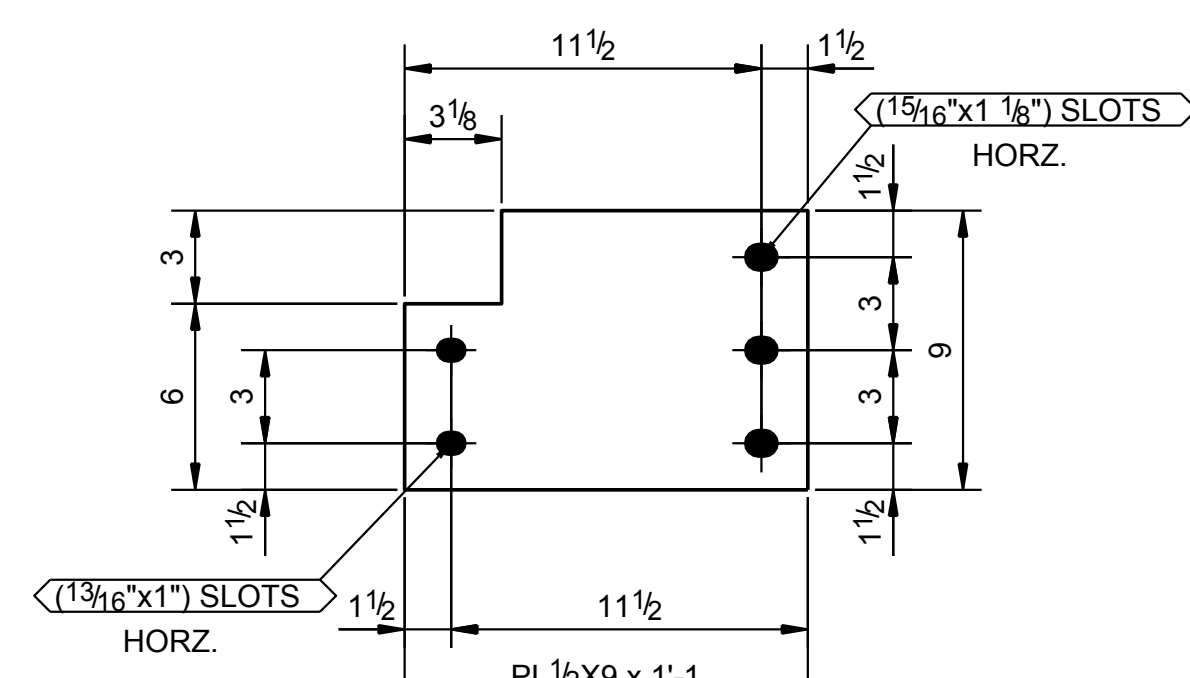
2 - ANGLES - a46



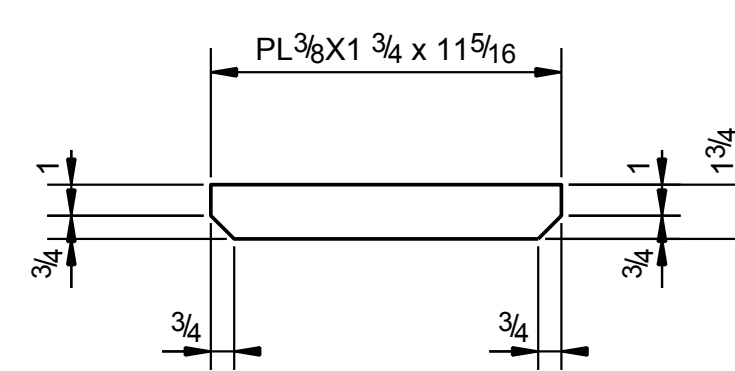
ONE - ANGLE - a42



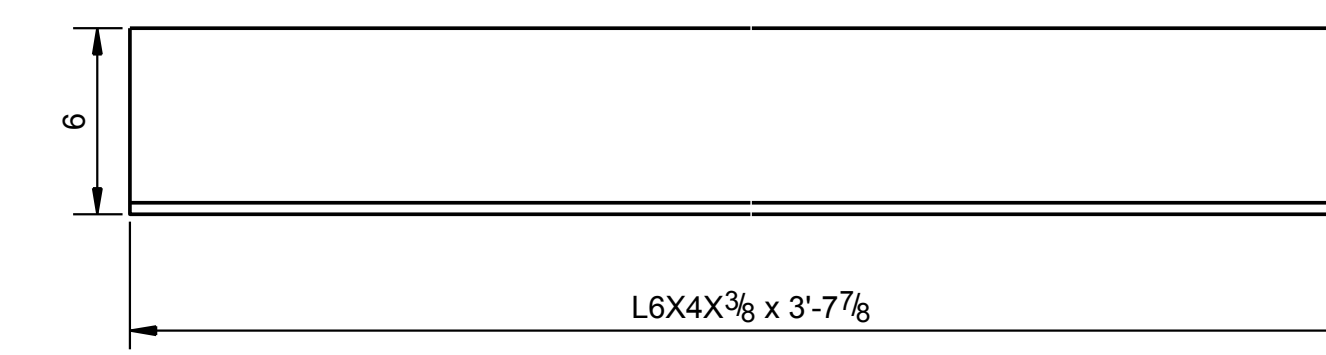
8 - ANGLES - a52



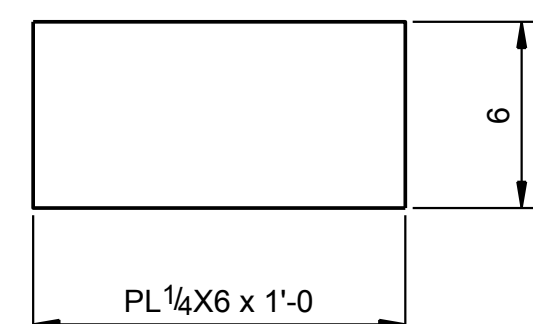
ONE - PLATE - p19



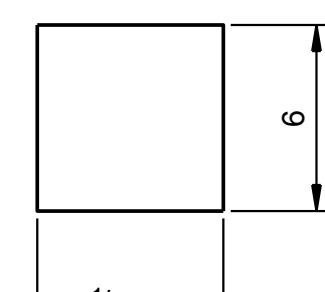
2 - PLATES - p3



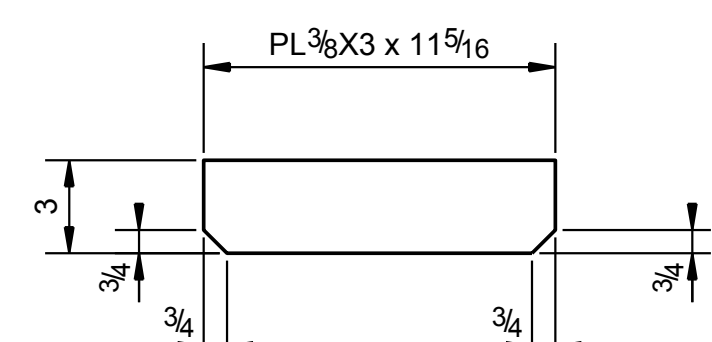
ONE - ANGLE - a48



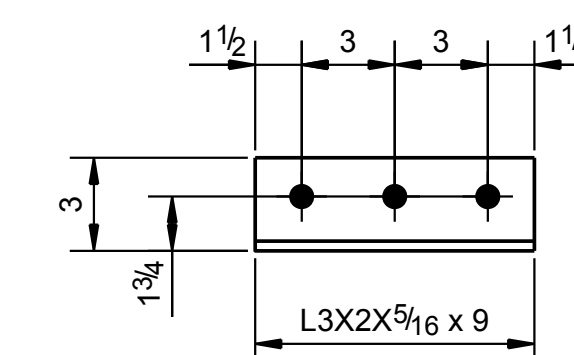
4 - PLATES - p14



11 - PLATES - p15



10 - STIFFENER PLATES - p13



30 - ANGLES - a53

STRUCTURAL STEEL SHAPES: ASTM A992  
 STEEL ANCHOR RODS: ASTM F1554 GRADE 36  
 STEEL PLATES AND ANGLES: ASTM A36 GRADE 36  
 ALL STRUCTURAL STEEL TUBES: ASTM A500 GRADE B  
 ALL STRUCTURAL STEEL PIPES: ASTM A53 GRADE B  
 ALL STRUCTURAL ANCHOR BOLT: ASTM F1554 GRADE 36

NOTES

1. OPEN HOLES 13/16" UNLESS NOTED
2. ALL EDGE DISTANCES ARE 1 1/4 UNLESS NOTED.
3. SHOP PAINT - 1 S/C NMEC U.N.O.
4. CLEANING SPEC. = SSPC-SP3
5. ALL WELDS E70XX
- 6.

PRINT RECORD

DATE	NO.	APP.	USE
02/06/2017	0		
		FIN. APP.	
		SHOP	
		FIELD	
		ERECTOR	

REVISIONS

DATE	BY	DESCRIPTION
02/06/2017	GM	ISSUED FOR FABRICATION



ACTIVE MEMBER

DESCRIPTION	SMALL PARTS
DWN. BY	GM
DATE	02/04/2017
CHK' D. BY	RK
DATE	02/06/2017

JOB NAME	JOB NO.
ADDRESS	
PURCHASER	DWG. NO.
ARCHITECT	SP1